



Hunt Estates

CHRISTIE'S  
INTERNATIONAL REAL ESTATE

Detached Bungalow Offering Space And Privacy  
St. Martin, Jersey

## DETACHED BUNGALOW OFFERING SPACE AND PRIVACY WITHIN AN EXTENSIVE PLOT

Located within a generous and secluded plot, this impressive, detached bungalow with over 3,200 sq. ft of accommodation combines space, comfort, and privacy in one of St. Martin's most desirable locations. Designed with versatile living in mind, it offers the perfect balance of a welcoming family home and a peaceful countryside retreat. It would suit those looking to scale down to a house on one level.

The accommodation is arranged across one level and includes four spacious double bedrooms, two bathrooms, and five reception rooms, providing flexibility for both family life and entertaining. The sitting room is particularly striking, enjoying a triple aspect outlook that floods the space with natural light, complemented by a beautiful granite fireplace for added warmth and character. The kitchen and breakfast room form the heart of the home, seamlessly connected to a well-proportioned dining room through an attractive archway, where another fireplace adds charm and atmosphere.

A beautifully finished study provides the ideal home office or can easily serve as a fifth bedroom. Practical touches include a dedicated utility room, while excellent storage solutions are found throughout. High ceilings, generous proportions, and large windows further enhance the light and airy atmosphere, ensuring every room feels spacious and inviting.

Outdoors, the property truly shines, with wrap-around gardens offering a variety of spaces to relax and unwind. A heated swimming pool, complete with its own pool house with shower and WC facilities, makes summer days feel like a private holiday at home.

The grounds also feature a double garage and extensive ample driveway parking, ideal for welcoming family and friends. There is a lovely view across the countryside to St. Martin's church and spire.

Potential building plot, subject to planning permission. Please contact us for more information.

The property is just a short walk to the village green, where you'll find the Pavilion tearoom for coffee and cake, St. Martin's pub for relaxed dining, and essentials such as Marks & Spencer, a pharmacy, and a doctor's surgery. Families will appreciate the proximity of St. Martin's Primary School, while excellent bus links connect you easily with the wider island.

For leisure, residents can enjoy scenic country walks surrounded by wildlife, or head to the nearby coastline for beach strolls, rock pooling, and sea swims. Outdoor enthusiasts will love the area's network of cycling and walking routes, as well as its proximity to Rozel Harbour, a charming fishing port with waterside dining. For a more active lifestyle, sailing, paddle boarding, and horse riding are all popular pastimes in the parish.

St. Martin perfectly blends rural tranquillity with community spirit, making it one of Jersey's most sought-after parishes. This bungalow offers the rare opportunity to enjoy it all from the comfort of an exceptional home. This is a perfect family home, or it may suit those looking to scale down to a house on one level.

## FEATURES

- Detached bungalow positioned within a large, secluded plot
- Four double bedrooms, two bathrooms
- Five reception rooms
- Versatile study or fifth bedroom
- Wrap around gardens
- Heated pool with pool room, shower and toilet facilities
- Peaceful countryside setting with easy access to village amenities
- Over 3,200 sq ft of accommodation
- Potential building plot subject to planning permission

## INFORMATION

- Mains water and drains
- Borehole for the garden
- Oil fired central heating with radiators
- Mostly double glazed
- Double garage and ample guest parking
- Parish rates for 2024 were £1,265
- Freehold and Entitled/Licensed





Hur  
CHRISTIE'S















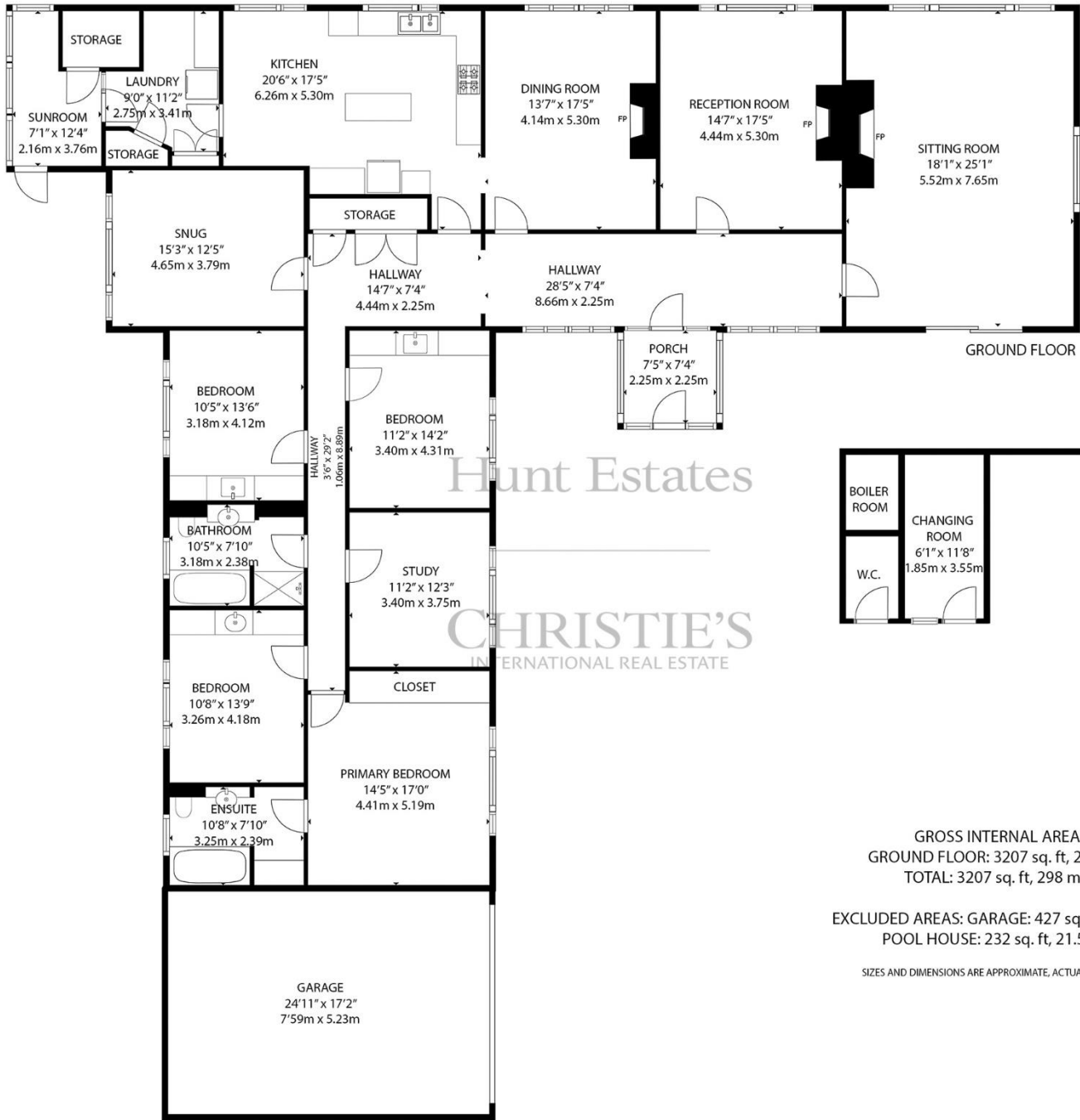
Hu... Es... es

CHRISTIE'S  
INTERNATIONAL REAL ESTATE









Hunt Estates  
 CHRISTIE'S  
 INTERNATIONAL REAL ESTATE

GROSS INTERNAL AREA  
 GROUND FLOOR: 3207 sq. ft, 298 m2  
 TOTAL: 3207 sq. ft, 298 m2

EXCLUDED AREAS: GARAGE: 427 sq. ft, 39.7 m2  
 POOL HOUSE: 232 sq. ft, 21.5 m2

SIZES AND DIMENSIONS ARE APPROXIMATE, ACTUAL MAY VARY

As the selected exclusive affiliate of Christie's International Real Estate in Jersey, Channel Islands, Hunt Estates combines local expertise with global reach via Christie's affiliation to the most famous real estate companies in the world.

An invitation-only affiliate network, Christie's International Real Estate selected Hunt Estates in 2020 to represent the famous Christie's brand in the sphere of luxury real estate in Jersey.



# Hunt Estates

# CHRISTIE'S

INTERNATIONAL REAL ESTATE

9 New Street, St Helier, Jersey, JE2 3RA, Channel Islands | +44 1534 860650 | [www.huntestates.com](http://www.huntestates.com) | [enquiries@huntestates.com](mailto:enquiries@huntestates.com)

Disclaimer: All information provided herein has been obtained from sources believed reliable, but may be subject to errors, omissions, change of price, prior sale, withdrawal without notice. Hunt Estates make no representation, warranty, or guarantee as to accuracy of any information contained herein. You should consult your advisors for an independent investigation of any properties. All viewings to be conducted through Hunt Estates.