



## STUNNING REGENCY PROPERTY

Once in a lifetime opportunity to own a piece of Jersey history, in this stunning home with its timeless Regency architecture.

Set in the middle of surrounding gardens, this captivating home has a pillared and gated entrance with a driveway leading to this most-appealing home of grand proportions.

The impressive main entrance stands tall with a covered portico and doric fluted columns either side. As you step inside, the high ceilings and wide entrance hall evoke thoughts of a bygone era. The rooms have large windows and are filled with natural light.

The current owner has brought the property to modern day standards, whilst sympathetically considering the original features.

There are four levels of living space covering some 5,635sq ft.

At entrance level (first floor) there is a 31ft entrance hall with a beautiful mahogany staircase, an impressive 33 ft sitting room with real fire and four sets of large windows bringing the outside in.

Also, on this level are three further reception rooms, which can be used as a separate dining room, snug or study. There is also a guest cloakroom.

The stairs lead up to the second floor, which again has high ceilings and large windows. There are three-bedroom suites at this level, the main bedroom is 22ft in length with views over the garden and countryside beyond. The luxurious en-suite bathroom has a large bath with shower, and a feature fireplace.

The third floor has bedrooms four and five, and a family bathroom.

















The ground floor area is generous and spacious and includes two reception rooms which could have many uses including a gym, music room, hobby room or playroom. There is also a laundry room, boiler room and bathroom. Of particular note is the beautiful 31ft kitchen which is designed in keeping with the style of the house. It has a large Aga and centre island. It is the perfect space for the family to gather and for informal suppers. There is a door with convenient outside access to the garden, swimming pool and parking area.



The swimming pool is heated and set in a private sheltered area. There is also an outside shower.

The two-car garage has space above with stairs to a generous area that can be used for storage or as a hobby room. There are also separate side stores for garden furniture or equipment.

\*Please note some of the images included are computer generated.









## FEATURES

- Stunning regency home
- Pillared and gated entrance
- Five bedrooms, four bathrooms
- Sitting room with real fire
- Spacious eat in kitchen/dining room
- Swimming pool area with shower
- Garage with space above, which can be used as storage/hobby room

## INFORMATION

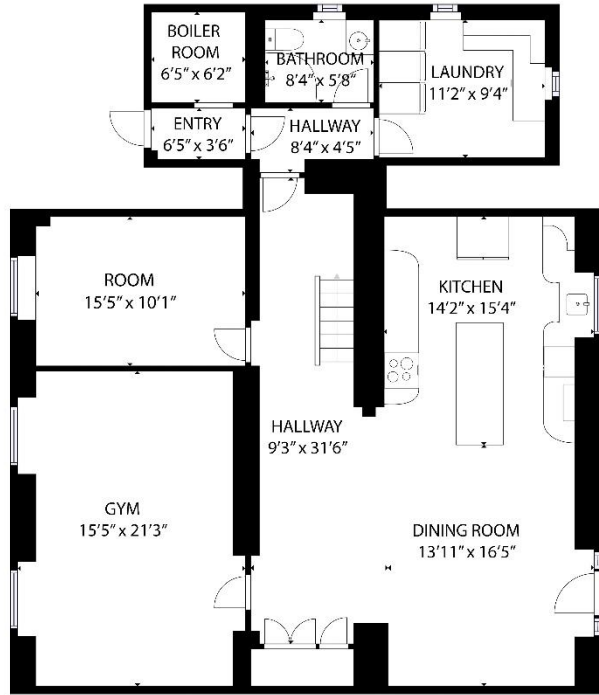
- Mains water and drains
- Oil fired central heating
- Original single glazed wooden sash windows
- Grade 4 listed building
- Two car garage and ample driveway parking
- Parish rates for 2023 were £2,047
- Freehold and Entitled/Licensed



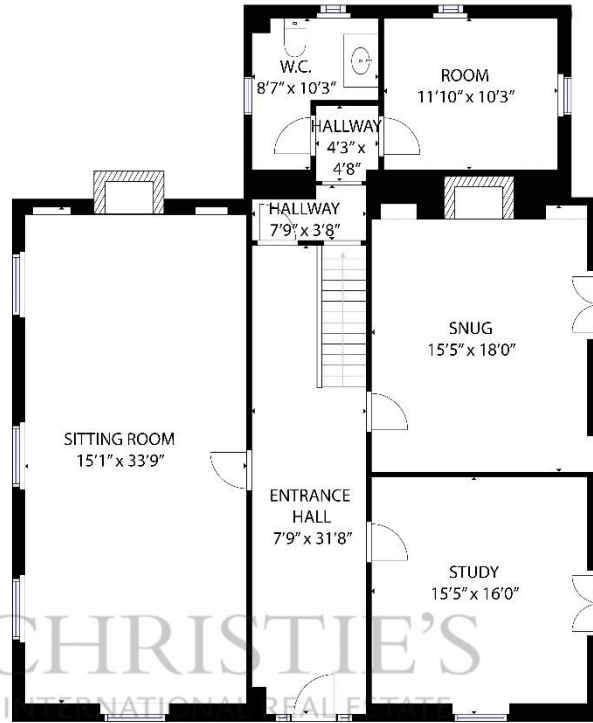
Gill Hunt, FNAEA  
Director

[gill@huntestates.com](mailto:gill@huntestates.com)  
T +44 (0)7797 721881  
[www.huntestates.com](http://www.huntestates.com)  
9 New Street, St Helier,  
Jersey, JE2 3RA

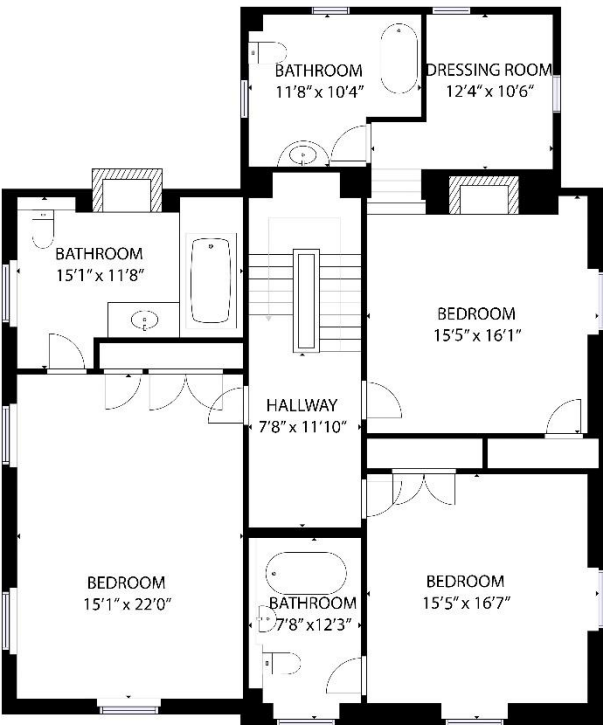
**CHRISTIE'S** | Hunt Estates  
INTERNATIONAL REAL ESTATE



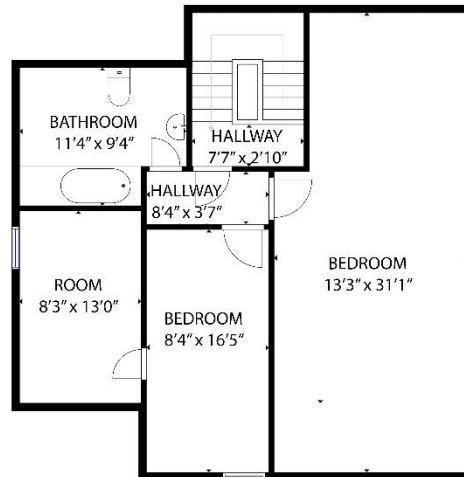
GROUND FLOOR



FIRST FLOOR



SECOND FLOOR



THIRD FLOOR

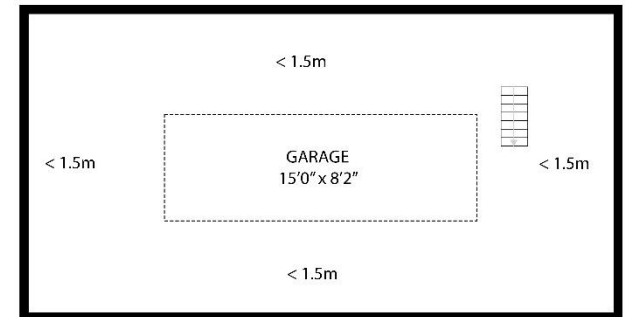
GROSS INTERNAL AREA  
 GROUND FLOOR: 1537 sq. ft, FIRST FLOOR: 1619 sq. ft  
 SECOND FLOOR: 1618 sq. ft, THIRD FLOOR: 861 sq. ft  
 TOTAL: 5635 sq. ft

EXCLUDED AREAS: GARAGE+STORE: 862 sq. ft  
 REDUCED HEADROOM BELOW 1.5M GARAGE: 624 sq. ft

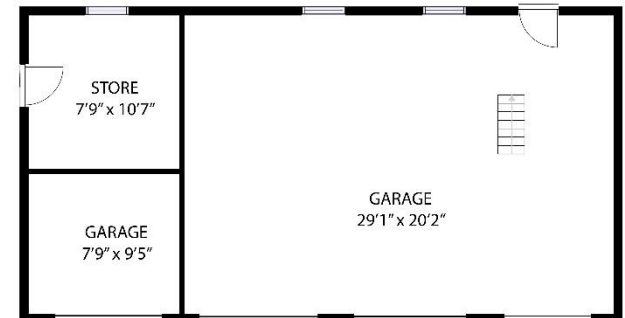
SIZES AND DIMENSIONS ARE APPROXIMATE, ACTUAL MAY VARY

CHRISTIE'S  
 INTERNATIONAL REAL ESTATE

Hunt Estates



GARAGE LOFT



GARAGE

As the selected exclusive affiliate of Christie's International Real Estate in Jersey, Channel Islands, Hunt Estates combines local expertise with global reach via Christie's affiliation to the most famous real estate companies in the world.

An invitation-only affiliate network, Christie's International Real Estate selected Hunt Estates in 2020 to represent the famous Christie's brand in the sphere of luxury real estate in Jersey.

# CHRISTIE'S | Hunt Estates

INTERNATIONAL REAL ESTATE

9 New Street, St Helier, Jersey, JE2 3RA, Channel Islands | +44 1534 860650 | [www.huntestates.com](http://www.huntestates.com) | [enquiries@huntestates.com](mailto:enquiries@huntestates.com)

Disclaimer: All information provided herein has been obtained from sources believed reliable, but may be subject to errors, omissions, change of price, prior sale, withdrawal without notice. Hunt Estates make no representation, warranty, or guarantee as to accuracy of any information contained herein. You should consult your advisors for an independent investigation of any properties. All viewings to be conducted through Hunt Estates.