



CHRISTIE'S
INTERNATIONAL REAL ESTATE

Hunt Estates

CHRISTIE'S | Hunt Estates
INTERNATIONAL REAL ESTATE

Stylish Townhouse in The Heart of St Aubin
St Brelade, Jersey

STYLISH TOWNHOUSE IN THE HEART OF ST AUBIN

Located in the prestigious, cobbled high street in the village of St. Aubin in the South/West of the island, this four-storey apartment has great presence with its beautiful columned façade.

Enjoying panoramic southerly views over the pretty harbour, the fort and the entire St. Aubin's Bay from the upper reception rooms and large sun terrace (which is accessed from the sitting room), this four-bedroom apartment is highly desirable.

Just a walk down the High Street takes you to the heart of St. Aubin's village where you can enjoy the many restaurants and cafes around the harbour or walk along the promenade that runs along the entire bay. For those who enjoy swimming and water sports, the beach and facilities are just a short walk away.

The property is perfect for a family with young adults who want to live in the western part of the island in a prime location which has the benefit of being near to the sea, beach and on a frequent bus route.

The property is accessible via steps at the front or by lift from the underground car park. The ground floor features a guest bedroom suite and dedicated laundry facilities, while the first floor offers two bedrooms, each with an en-suite bathroom, plus a convenient walk-in storage room.

The second floor comprises a large kitchen/diner with views over the bay. There is also a main bedroom suite with bifold doors leading to the rear garden.

On the third floor is a large sitting room facing South with doors that open on to a large balcony, making it perfect for entertaining and enjoying the enviable views over the bay and harbour.

There is secure parking for two cars. Tenant currently in situ.

The current owner has investigated the possibility of installing a lift to provide easier access throughout the property.







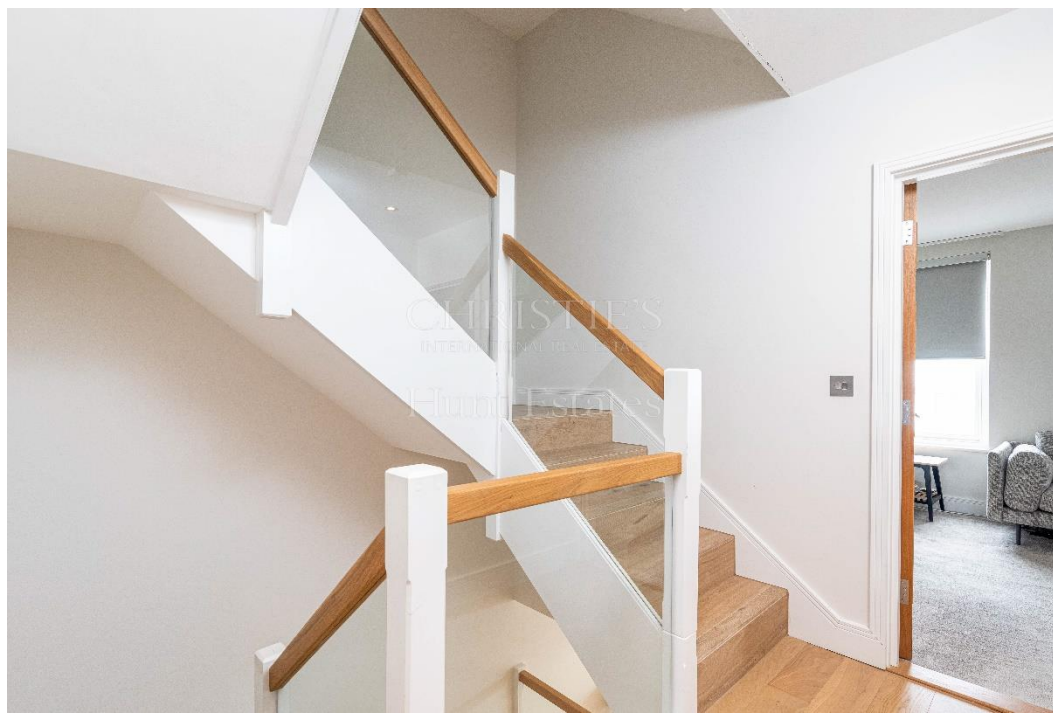




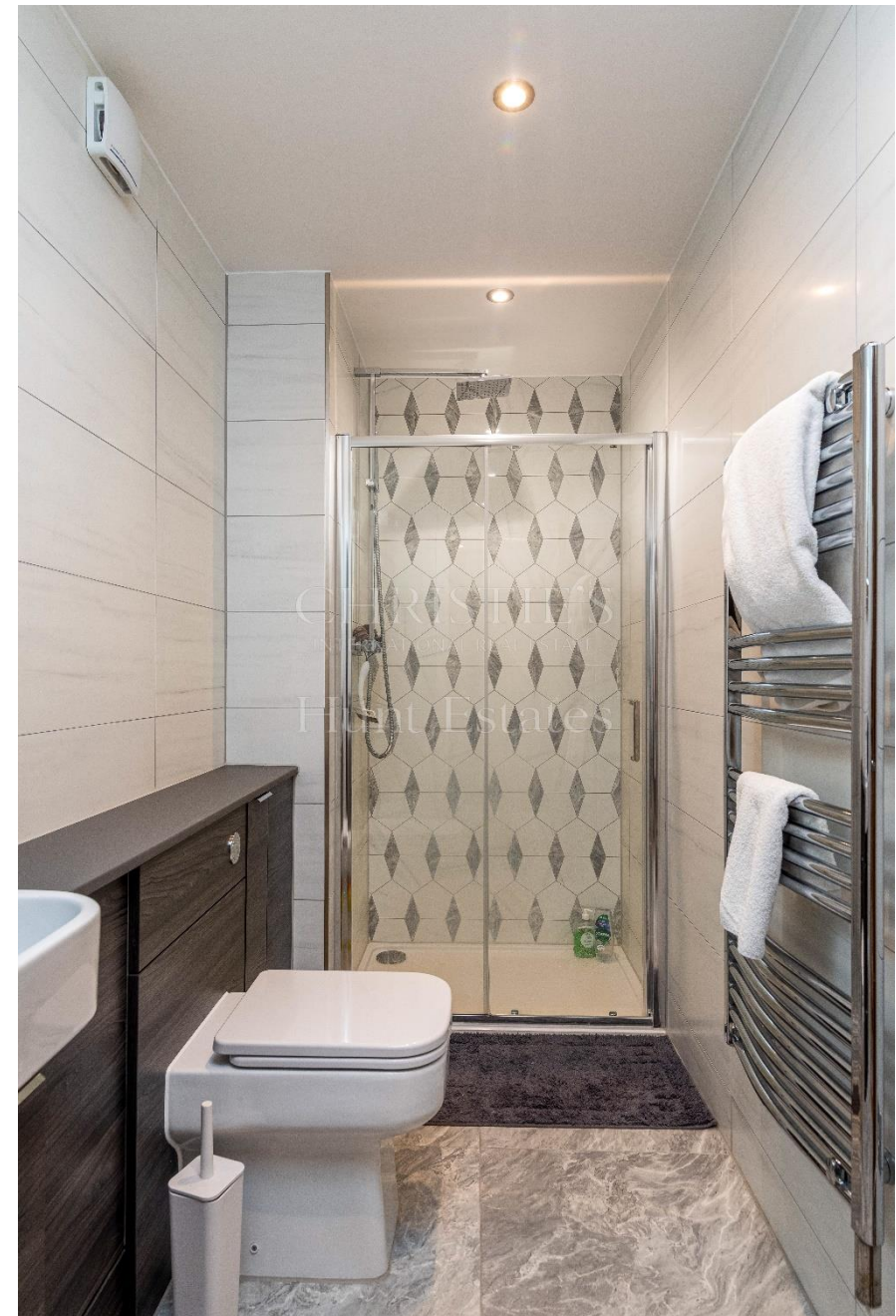


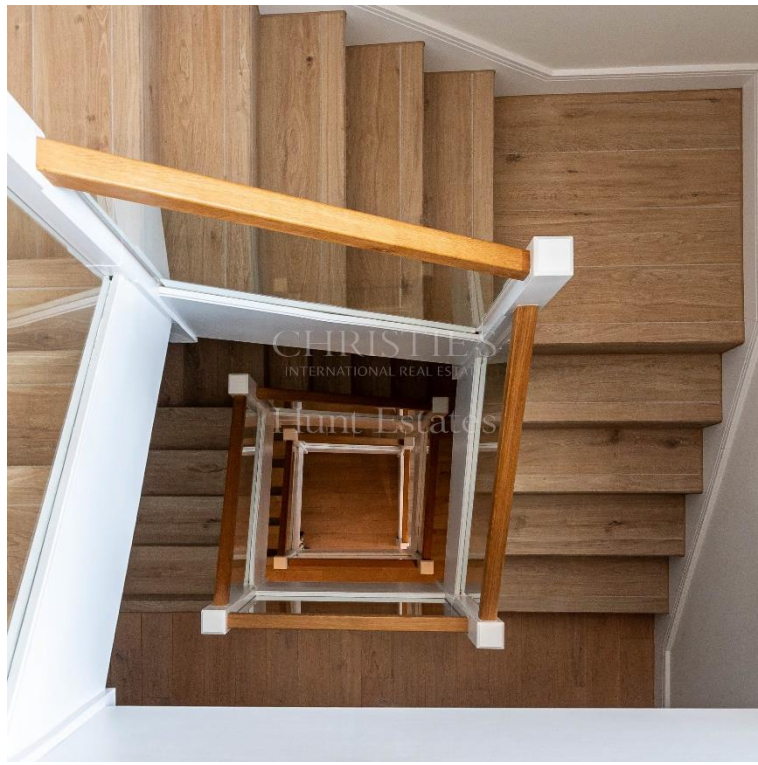












FEATURES

- Pretty apartment in cobbled High Street
- Four bedrooms
- Four en suite plus WC
- Large balcony on top floor overlooking St Aubin's Bay, Fort, and Harbour
- Rear terrace
- Minutes' walk to restaurants and cafes
- Possible Lift Access

INFORMATION

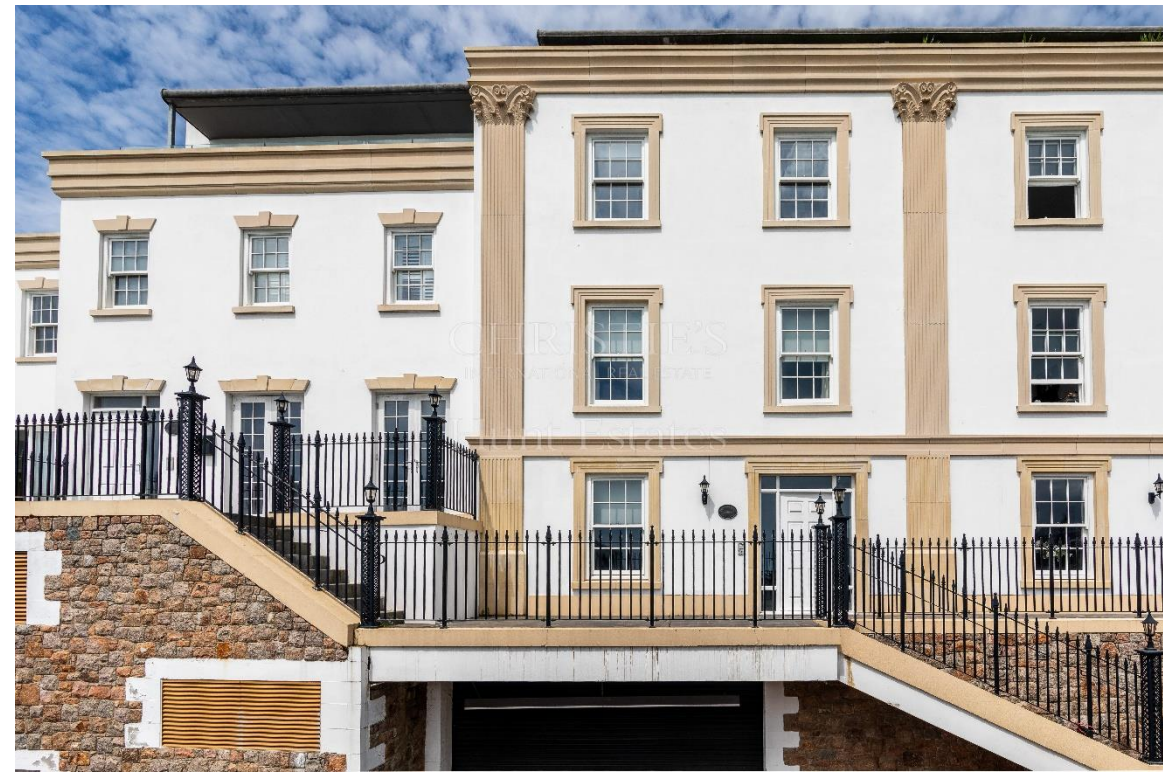
- Mains water and drains
- Electric heating
- Double glazed
- Secure parking for two cars
- Tenant currently in situ
- Flying Freehold and Entitled/Licensed

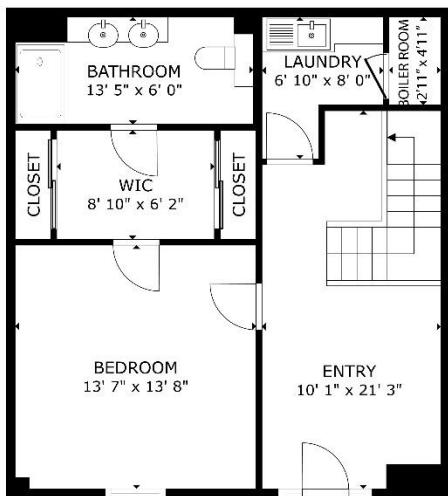


Gill Hunt, FNAEA
Director

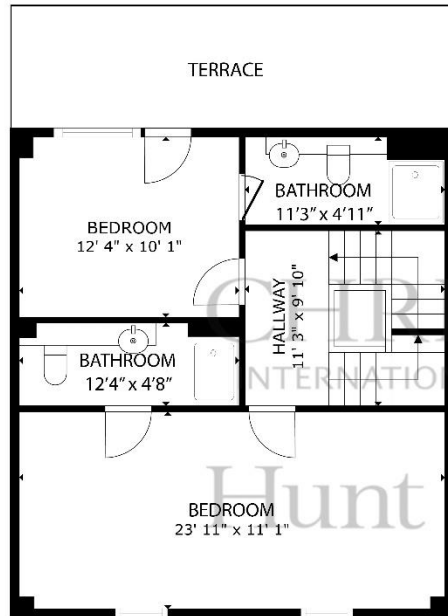
gill@huntestates.com
T +44 (0)7797 721881
www.huntestates.com
9 New Street, St Helier,
Jersey, JE2 3RA

CHRISTIE'S | Hunt Estates
INTERNATIONAL REAL ESTATE

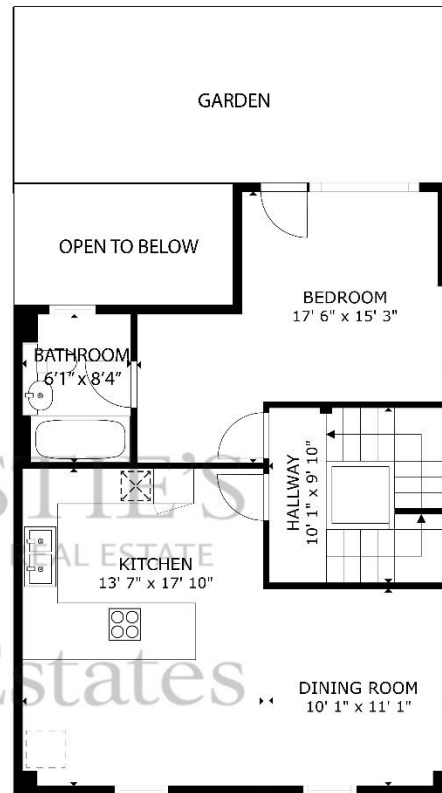




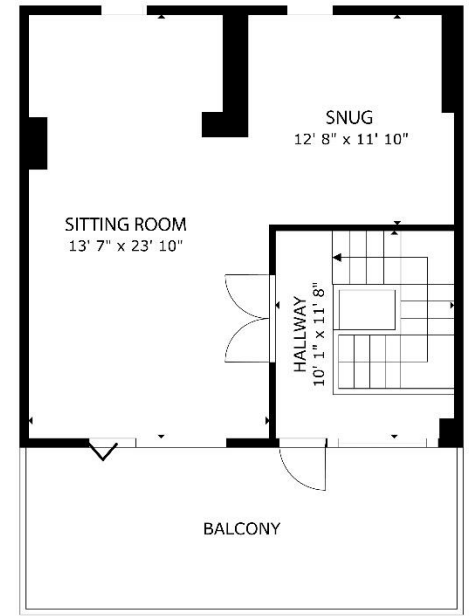
GROUND FLOOR



FIRST FLOOR



SECOND FLOOR



THIRD FLOOR

GROSS INTERNAL AREA

GROUND FLOOR: 635 sq. ft, FIRST FLOOR: 635 sq. ft, SECOND FLOOR: 715 sq. ft, THIRD FLOOR: 570 sq. ft
TOTAL: 2554 sq. ft

SIZES AND DIMENSIONS ARE APPROXIMATE, ACTUAL MAY VARY

As the selected exclusive affiliate of Christie's International Real Estate in Jersey, Channel Islands, Hunt Estates combines local expertise with global reach via Christie's affiliation to the most famous real estate companies in the world.

An invitation-only affiliate network, Christie's International Real Estate selected Hunt Estates in 2020 to represent the famous Christie's brand in the sphere of luxury real estate in Jersey.

CHRISTIE'S | Hunt Estates

INTERNATIONAL REAL ESTATE

9 New Street, St Helier, Jersey, JE2 3RA, Channel Islands | +44 1534 860650 | www.huntestates.com | enquiries@huntestates.com

Disclaimer: All information provided herein has been obtained from sources believed reliable, but may be subject to errors, omissions, change of price, prior sale, withdrawal without notice. Hunt Estates make no representation, warranty, or guarantee as to accuracy of any information contained herein. You should consult your advisors for an independent investigation of any properties. All viewings to be conducted through Hunt Estates.