



CHRISTIE'S | Hunt Estates
INTERNATIONAL REAL ESTATE

Detached Country Home with Land
St. Lawrence, Jersey

DETACHED COUNTRY HOME WITH LAND

A modern family home that has been lovingly restored to bring it to a very high standard.

The rooms and layout have been re-designed and the house extended to include spacious reception rooms and a fabulous 40ft kitchen/diner/family room. The property really must be viewed to appreciate all it has to offer. With approx. 5,800 sq ft (including garaging, see floor plan) it has space for all the family to spread out and relax, as well as having space for guests or staff.

As you approach the property through electric gates there is an attractive turning circle, garaging and ample parking. The main entrance hall is open and double height, allowing the light to flood in. there is a tourelle style staircase reminiscent of an old Jersey farmhouse. There is a drawing room with a real fire, a TV room, a study, cloakroom and utility/boot room. At first floor level, there is an impressive main bedroom, it has a vaulted ceiling giving a sense of space. There are doors to a balcony, which overlooks the garden and a field in the property's ownership. The views are far-reaching towards the sea in the distance. There is a well-designed good-sized bathroom, with freestanding bath and separate walk-in shower, a staircase leads to a dressing room.

There are four more bedrooms in the main house, two are en-suite with a dressing room and bedroom three has a raised mezzanine ideal for a teenager or sleepovers. Bedrooms three and four share the family bathroom.

In addition, there is a two bedroom annex set above the garage with separate external staircase access and a seventh bedroom with stairs from the rear of the kitchen.

Externally the property embraces outdoor living and has a great deal to offer. Of particular note is the fabulous outdoor dining area with pergola, kitchen and bar area. There is space for an extra-large refectory table for all the family to relax and enjoy. This area leads seamlessly to a swimming pool for maximum summer enjoyment. It comes with an electric safety cover for convenience and ease. Adjacent are pool changing rooms and an outdoor shower.

The beautifully landscaped garden is a real pleasure. You can cast your eye over the adjoining field, which has equine grazing and keep a watchful eye on your treasured horses. Importantly, the garden is very private.

There is good storage around the home with four garages and ample parking. This tasteful home needs to be viewed to fully appreciate the love, care and good design.

St Lawrence, centrally located for access to St. Helier and picturesque harbour of St. Aubin with restaurants and shops, St. Brelade's Bay where the soft sand and inviting sea is popular all year round. Enjoy sitting above the beach and choose the perfect restaurant to enjoy breakfast, lunch or dinner. A 10-minute drive will take you to the airport or golf courses in the west of the island.









CHRISTIE'S
INTERNATIONAL REAL ESTATE
Hunt Estates























FEATURES

- Perfect family home
- Recently renovated and extended
- Noteworthy gardens, pool and outdoor kitchen
- 5 beds plus separate 2-bedroom apartment
- 40ft kitchen/family room
- Separate horse grazing field

INFORMATION

- Air sourced heat pump for house and pool
- Borehole water with treatment plant
- Soak away drains
- Parish rates £1,600 per annum
- Extension and renovation 2011
- Four garages and ample parking
- Freehold and Entitled/Licensed

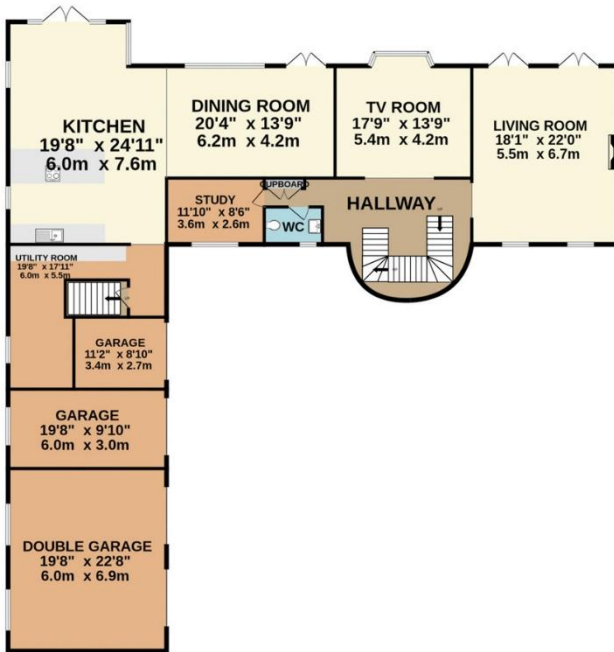


Gill Hunt, FNAEA
Director

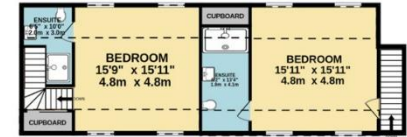
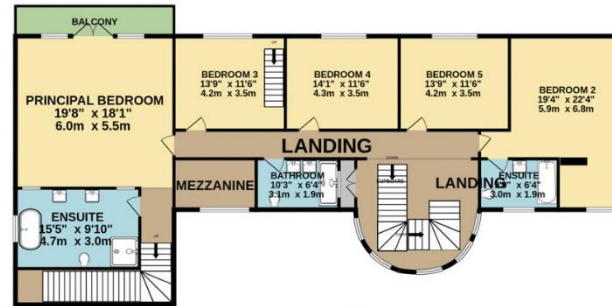
gill@huntstates.com
T +44 (0)7797 721881
www.huntstates.com
9 New Street, St Helier,
Jersey, JE2 3RA

CHRISTIE'S | Hunt Estates
INTERNATIONAL REAL ESTATE

GROUND FLOOR
2841 sq.ft. (264.0 sq.m.) approx.



1ST FLOOR
2690 sq.ft. (249.9 sq.m.) approx.



2ND FLOOR
330 sq.ft. (30.6 sq.m.) approx.



CHRISTIE'S
INTERNATIONAL REAL ESTATE
Hunt Estate

TOTAL FLOOR AREA : 5861 sq.ft. (544.5 sq.m.) approx.

Whilst every attempt has been made to ensure the accuracy of the floorplan contained here, measurements of doors, windows, rooms and any other items are approximate and no responsibility is taken for any error, omission or mis-statement. This plan is for illustrative purposes only and should be used as such by any prospective purchaser. The services, systems and appliances shown have not been tested and no guarantee as to their operability or efficiency can be given.

Made with Metropix ©2024

As the selected exclusive affiliate of Christie's International Real Estate in Jersey, Channel Islands, Hunt Estates (or Christie's Jersey) combines local expertise with global reach via Christie's affiliation to the most famous real estate companies in the world.

An invitation-only affiliate network, Christie's International Real Estate selected Hunt Estates in 2020 to represent the famous Christie's brand in the sphere of luxury real estate in Jersey.

CHRISTIE'S | Hunt Estates

INTERNATIONAL REAL ESTATE

9 New Street, St Helier, Jersey, JE2 3RA, Channel Islands | +44 1534 860650 | www.huntestates.com | enquiries@huntestates.com

Disclaimer: All information provided herein has been obtained from sources believed reliable, but may be subject to errors, omissions, change of price, prior sale, withdrawal without notice. Hunt Estates make no representation, warranty, or guarantee as to accuracy of any information contained herein. You should consult your advisors for an independent investigation of any properties. All viewings to be conducted through Hunt Estates.