



Hunt Estates

CHRISTIE'S  
INTERNATIONAL REAL ESTATE

Detached Five Bedroom Family Home  
St. Mary, Jersey

## DETACHED FIVE BEDROOM FAMILY HOME

### FEATURES

- Detached family home
- Offers over 3000 sq. ft of living space
- 5 double bedrooms and 4 bathrooms
- 3 receptions
- House with potential income
- Extremely private south facing garden

### INFORMATION

- Main drains and water
- Oil fired central heating
- Double glazed
- Parking for 6 cars plus double garage
- Parish rates for 2024 were £988
- Freehold and Entitled/Licensed

This substantial detached family home, located in the heart of St Mary, offers over 3,000 sq. ft of living space, perfect for a growing family.

The ground floor features a generous kitchen and dining area that flows into a 30ft sunroom overlooking an extremely private, south-facing garden, perfect for entertaining. The light-filled sitting room, with a cosy log burner, also connects to the sunroom via floor-to-ceiling glass doors, flooding the space with natural light. The ground floor is completed by a cloakroom and separate boot room.

Upstairs, five double bedrooms include a primary suite with fitted wardrobes and an ensuite, a second double with its own ensuite, and two further doubles served by a family bathroom. The fifth bedroom, with external access and an ensuite, is ideal for a teenager or Airbnb use.

Outside, the mature gardens, with tall shrubs and bushes, provide privacy, a safe space for children and pets, and a haven for keen gardeners. A double garage, additional store room, and parking for up to six cars complete this wonderful family home.

This house is just a few minutes' walk from local shops, a bus stop, and the St Mary's pub.





Hunter Estates

CHAPMAN'S  
INTERNATIONAL REAL ESTATE

Y. RULES  
oll Bo Tg  
ARE  
UR BRET  
love you  
ANKNI  
LAPPY  
m Big  
Out Loud  
GATEFUL  
NO W  
Often











Hill States

CHRISTIE'S  
INTERNATIONAL REAL ESTATE

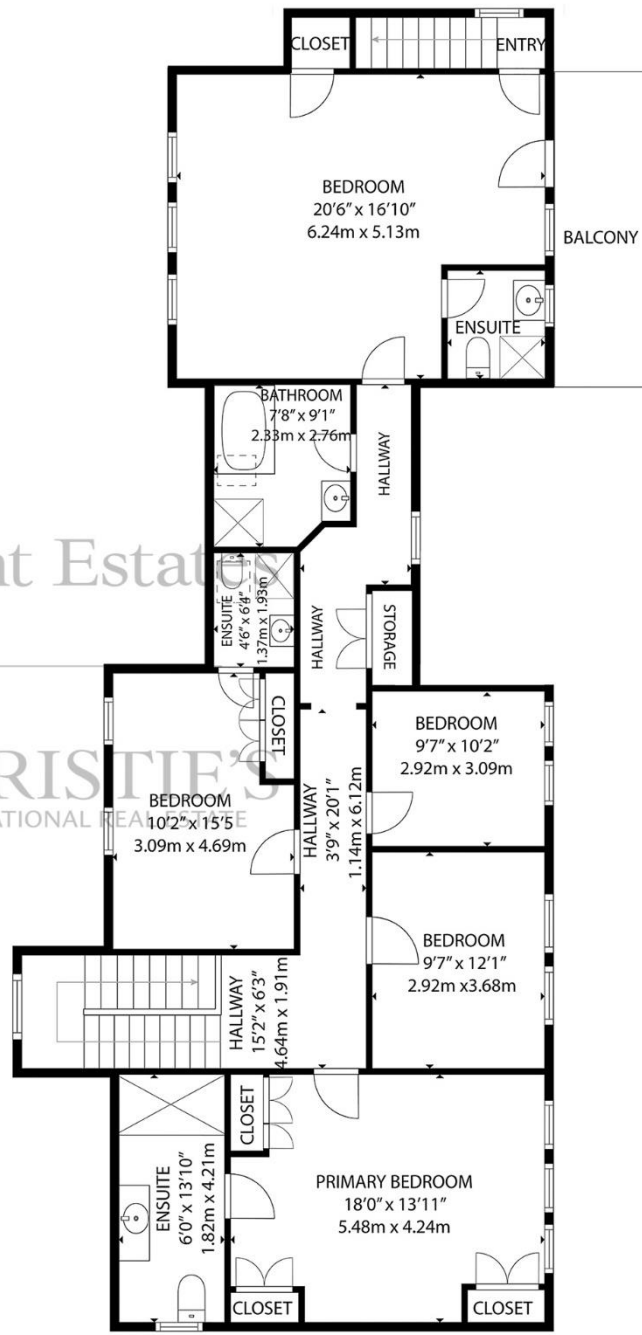
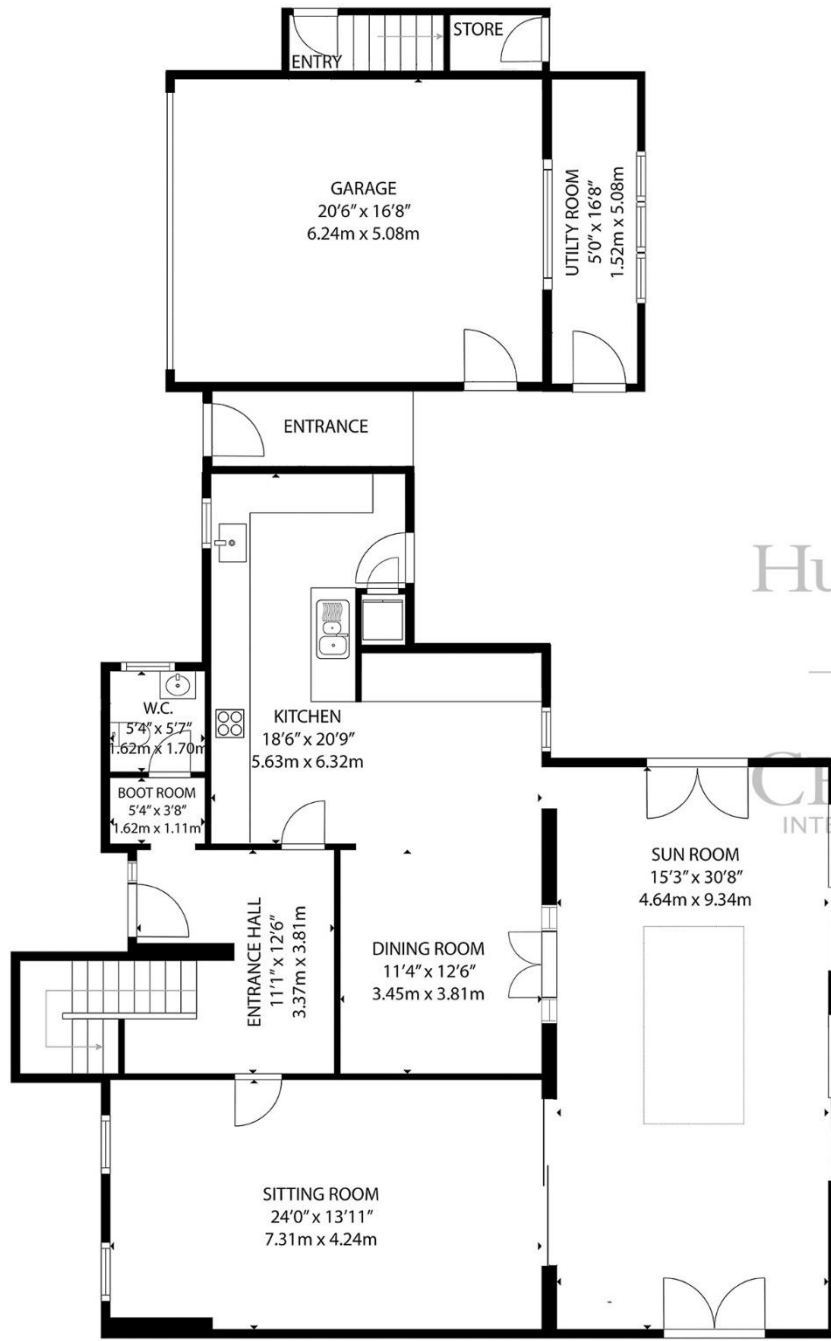












Hunt Estate

CHRISTIE'S INTERNATIONAL REAL ESTATE

GROSS INTERNAL AREA  
 GROUND FLOOR: 1534 sq. ft, 142.5 m2  
 FIRST FLOOR: 1501 sq. ft, 139.4 m2  
 TOTAL: 3035 sq. ft,

EXCLUDED AREAS:  
 GARAGE: 341 sq. ft, 32 m2,  
 UTILITY ROOM: 83 sq. ft, 7.7 m2

SIZES AND DIMENSIONS ARE APPROXIMATE, ACTUAL MAY VARY

As the selected exclusive affiliate of Christie's International Real Estate in Jersey, Channel Islands, Hunt Estates combines local expertise with global reach via Christie's affiliation to the most famous real estate companies in the world.

An invitation-only affiliate network, Christie's International Real Estate selected Hunt Estates in 2020 to represent the famous Christie's brand in the sphere of luxury real estate in Jersey.



# Hunt Estates

# CHRISTIE'S

INTERNATIONAL REAL ESTATE

9 New Street, St Helier, Jersey, JE2 3RA, Channel Islands | +44 1534 860650 | [www.huntestates.com](http://www.huntestates.com) | [enquiries@huntestates.com](mailto:enquiries@huntestates.com)

Disclaimer: All information provided herein has been obtained from sources believed reliable, but may be subject to errors, omissions, change of price, prior sale, withdrawal without notice. Hunt Estates make no representation, warranty, or guarantee as to the accuracy of any information contained herein; interested parties should conduct their own investigations and seek independent advice. No tests have been carried out on any fixtures, fittings, services, or appliances. Measurements are approximate, and photographs are for guidance only. All viewings must be arranged through Hunt Estates.