



Hunt Estates

CHRISTIE'S  
INTERNATIONAL REAL ESTATE

Three Bedroom Apartment With Sea Views  
St Brelade, Jersey

## THREE BEDROOM APARTMENT WITH SEA VIEWS

A highly desirable and spacious apartment set within the prestigious Portelet Bay development, offering an exceptional coastal lifestyle.

The property benefits from a generous terrace, ideal for entertaining and enjoying al fresco dining and drinks while taking in the stunning sea views.

Accessed via impressive secure gates, the development offers secure garage parking with fob-controlled entry. Located on the ground floor, the apartment enjoys step-free access directly from the garage to the front door, providing an effortless arrival to this beautifully appointed home and truly easy living by the sea.

The accommodation comprises an entrance hall with cloakroom, a bright and spacious sitting room with sliding doors opening onto the terrace and showcasing wonderful sea views. The sitting room is open plan to the kitchen, which features a central island with space for bar stools, a long picture window allowing you to enjoy sea views while cooking, and ample room for a dining table.

The apartment offers three double bedrooms. The generous principal bedroom features fitted wardrobes, an en suite bathroom with a bath and separate shower, and a door opening onto a small private terrace. The second bedroom also benefits from fitted wardrobes and an en suite bathroom with a spacious shower, while the third bedroom is served by a well-appointed family bathroom.

Practical touches include a generous storage cupboard and separate coat cupboard in the hallway, as well as a utility room with shelving, storage, and space for a washer/dryer.

The estate is surrounded by immaculately maintained gardens throughout the year, and residents of this select and prestigious development enjoy access to a communal tennis court and direct steps down to Portelet Beach, renowned for its soft golden sand and crystal-blue waters.

Nearby amenities include the charming beach restaurant serving wood-fired pizzas, the popular Portelet Inn and bar offering a delicious bistro menu, and an abundance of scenic coastal walks. Slightly further afield are golf courses and a shopping precinct with both M&S Food and Waitrose.

## FEATURES

- Fabulous sea views
- Three-bedroom apartment
- Own dining terrace whilst watch the sea
- Bookable Communal Tennis Court
- Sea front location with steps down to beach
- Beautiful landscaping to development
- Secure gated entrance

## INFORMATION

- Mains drains and water
- Electric heating
- Double glazed
- Lift service
- Two allocated parking spaces
- On site visitor parking
- Service charges £7,731.62 per annum, includes water and water heating. More info on request
- Parish rates for 2025 were £980.56
- Flying Freehold and Entitled/Licensed

















nt Estates

CHRISTIE'S  
INTERNATIONAL REAL ESTATE

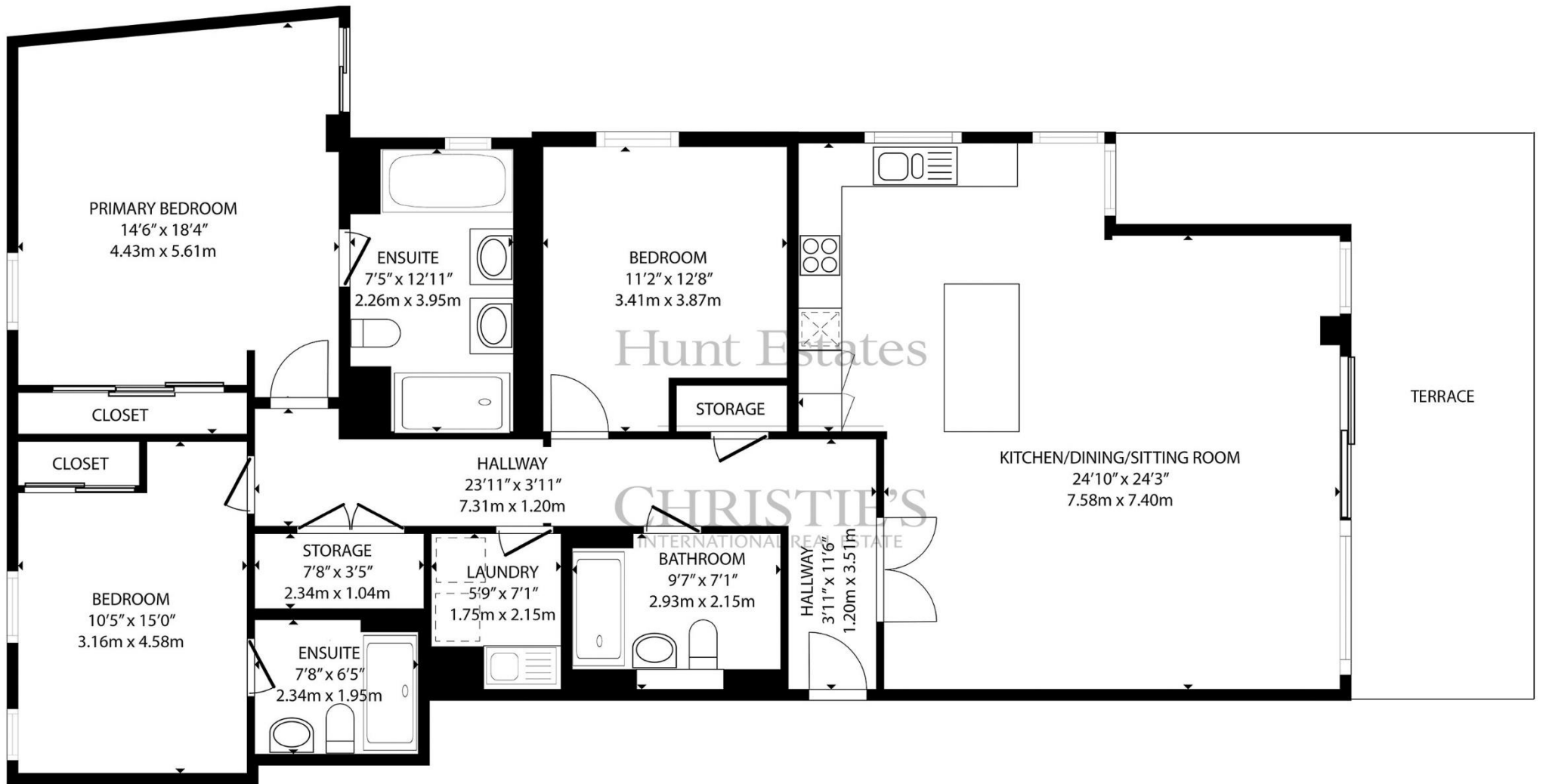






CHRISTIE'S  
INTERNATIONAL REAL ESTATE  
Hunt Estates





GROUND FLOOR

GROSS INTERNAL AREA  
 GROUND FLOOR: 1545 sq. ft, 143.4 m2  
 TOTAL: 1545 sq. ft, 143.4 m2

SIZES AND DIMENSIONS ARE APPROXIMATE, ACTUAL MAY VARY

As the selected exclusive affiliate of Christie's International Real Estate in Jersey, Channel Islands, Hunt Estates combines local expertise with global reach via Christie's affiliation to the most famous real estate companies in the world.

An invitation-only affiliate network, Christie's International Real Estate selected Hunt Estates in 2020 to represent the famous Christie's brand in the sphere of luxury real estate in Jersey.



# Hunt Estates

# CHRISTIE'S

INTERNATIONAL REAL ESTATE

9 New Street, St Helier, Jersey, JE2 3RA, Channel Islands | +44 1534 860650 | [www.huntestates.com](http://www.huntestates.com) | [enquiries@huntestates.com](mailto:enquiries@huntestates.com)

Disclaimer: All information provided herein has been obtained from sources believed reliable, but may be subject to errors, omissions, change of price, prior sale, withdrawal without notice. Hunt Estates make no representation, warranty, or guarantee as to the accuracy of any information contained herein; interested parties should conduct their own investigations and seek independent advice. No tests have been carried out on any fixtures, fittings, services, or appliances. Measurements are approximate, and photographs are for guidance only. All viewings must be arranged through Hunt Estates.