



Hunt Estates

CHRISTIE'S  
INTERNATIONAL REAL ESTATE

Three Bedroom Semi-Detached Granite Home  
St John, Jersey

## THREE BEDROOM SEMI-DETACHED GRANITE HOME

Built in 1822, this charming three-bedroom semi-detached granite home offers over 2,100 square ft of beautifully presented living space. This beautiful home is in walk in condition and ideally situated in the heart of St John, the property has been refurbished to an exceptional standard, seamlessly blending period character with modern comfort.

The ground floor comprises; a contemporary eat-in kitchen, two elegant reception rooms with granite fireplaces, a double bedroom with en-suite facilities, and a practical utility room and a cloakroom creating a versatile and well-balanced living environment.

On the first floor, there are two further double bedrooms, both featuring exposed beams and generous storage, alongside a tastefully appointed family bathroom.

Outside, the garden is thoughtfully designed with low-maintenance artificial turf and paving, providing a generous and versatile space ideal for entertaining.

To the front of the property there is ample parking for up to 8 cars and a storage shed with electric car charging point.

The home is conveniently located on a good bus route, within the catchment area for St John's Primary School, and has the local pub, church, shops, and amenities all within easy reach.

















## FEATURES

- Refurbished to a high standard
- 3 bedrooms, 2 bathrooms
- Granite fireplaces in both reception rooms
- Full of character
- Walk in condition
- Close to amenities

## INFORMATION

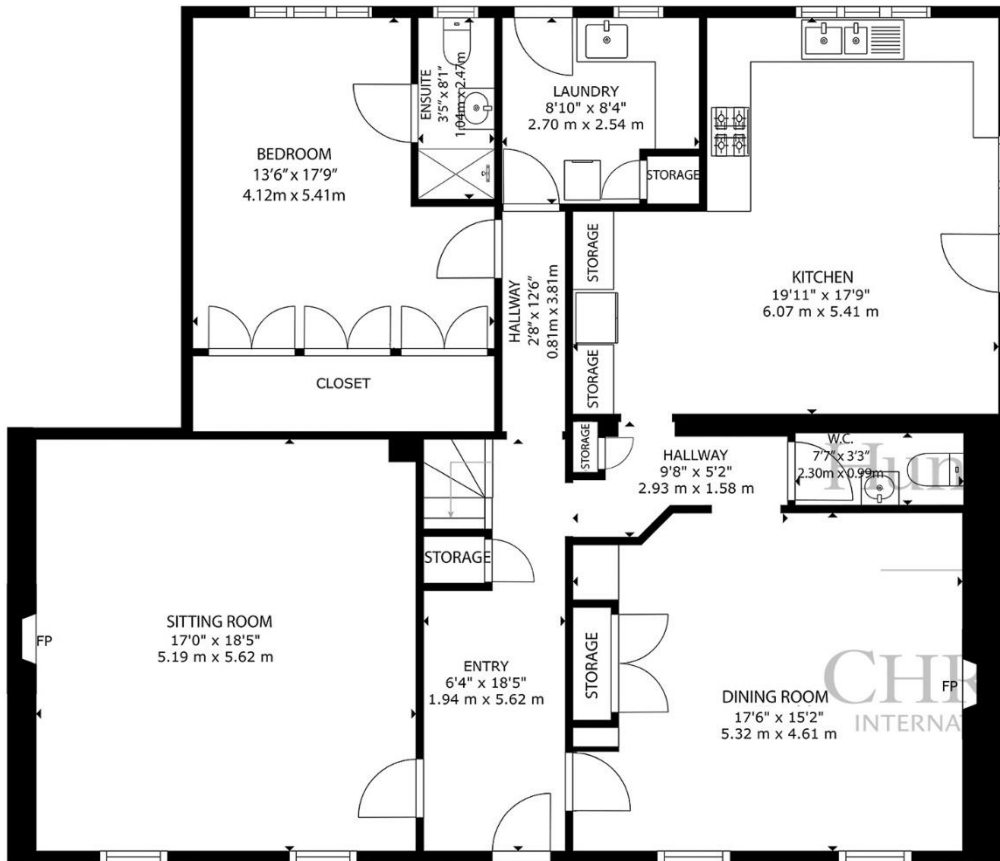
- Mains drains and water
- Oil fired central heating
- Double glazed
- Electric Car Charging Point
- Parking for up to 8 cars
- Parish rates for 2025 were £554
- Freehold and Entitled/Licensed



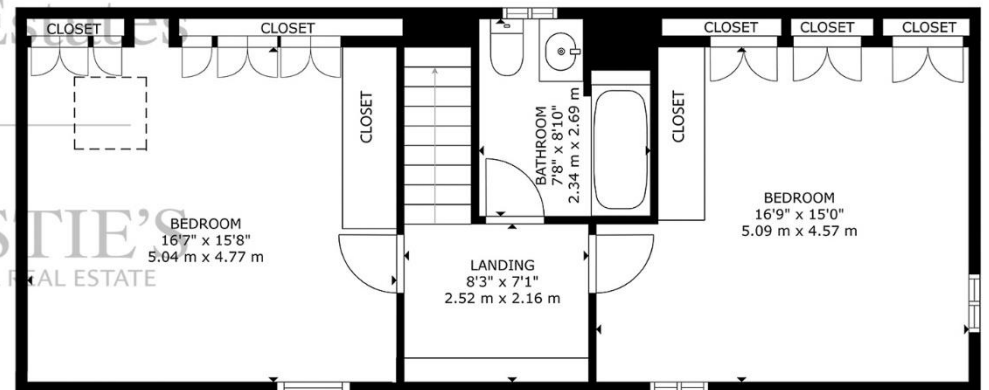
Gill Acton  
Property Negotiator

[gill.acton@huntestates.com](mailto:gill.acton@huntestates.com)  
T +44 (0)7797 961649  
[www.huntestates.com](http://www.huntestates.com)  
9 New Street, St Helier,  
Jersey, JE2 3RA

CHRISTIE'S | Hunt Estates  
INTERNATIONAL REAL ESTATE



GROUND FLOOR



FIRST FLOOR

GROSS INTERNAL AREA  
 GROUND FLOOR: 1499 sq. ft, 139.2 m<sup>2</sup>, FIRST FLOOR: 637 sq. ft, 59.1 m<sup>2</sup>  
 TOTAL: 2136 sq. ft, 198.3 m<sup>2</sup>

SIZES AND DIMENSIONS ARE APPROXIMATE, ACTUAL MAY VARY

As the selected exclusive affiliate of Christie's International Real Estate in Jersey, Channel Islands, Hunt Estates combines local expertise with global reach via Christie's affiliation to the most famous real estate companies in the world.

An invitation-only affiliate network, Christie's International Real Estate selected Hunt Estates in 2020 to represent the famous Christie's brand in the sphere of luxury real estate in Jersey.

# Hunt Estates

# CHRISTIE'S

INTERNATIONAL REAL ESTATE

9 New Street, St Helier, Jersey, JE2 3RA, Channel Islands | +44 1534 860650 | [www.huntestates.com](http://www.huntestates.com) | [enquiries@huntestates.com](mailto:enquiries@huntestates.com)

Disclaimer: All information provided herein has been obtained from sources believed reliable, but may be subject to errors, omissions, change of price, prior sale, withdrawal without notice. Hunt Estates make no representation, warranty, or guarantee as to the accuracy of any information contained herein; interested parties should conduct their own investigations and seek independent advice. No tests have been carried out on any fixtures, fittings, services, or appliances. Measurements are approximate, and photographs are for guidance only. All viewings must be arranged through Hunt Estates.