



Hunt Estates

First Time Buyers Only - Four Bedroom Family Home
St Saviour, Jersey

FIRST TIME BUYERS ONLY - FOUR BEDROOM FAMILY HOME

****First time buyers only****

This well presented detached four-bedroom family home is located in a sought-after, family-friendly area, offering the perfect blend of modern living and everyday convenience, with stunning views across the St Saviour's countryside.

To the front of the home is a stunning, recently refitted kitchen, The spacious living room features doors opening onto a private garden, where you can enjoy uninterrupted views across the fields making it ideal for relaxing or entertaining. The ground floor also benefits from a convenient cloakroom and generous under-stairs storage.

Upstairs, the property offers four double bedrooms and two bathrooms, providing ample space for a growing family. The primary bedroom is a real highlight, complete with a dressing room and en-suite shower room.

Externally, the home provides parking for three cars, along with ample visitor parking. The development also features a well-maintained children's playground, adding to its strong family appeal.

This property is in close proximity to all the major schools, shops, bus stop and restaurants but you also have the countryside right on your doorstep.

















FEATURES

- First time buyers only
- 4 double bedrooms and 2 bathrooms
- Primary bedroom with en-suite and dressing room
- Views across the fields
- Approx 1,268 sq. ft of accommodation
- Private enclosed garden
- Near all major schools, pub, bus stop and shops

INFORMATION

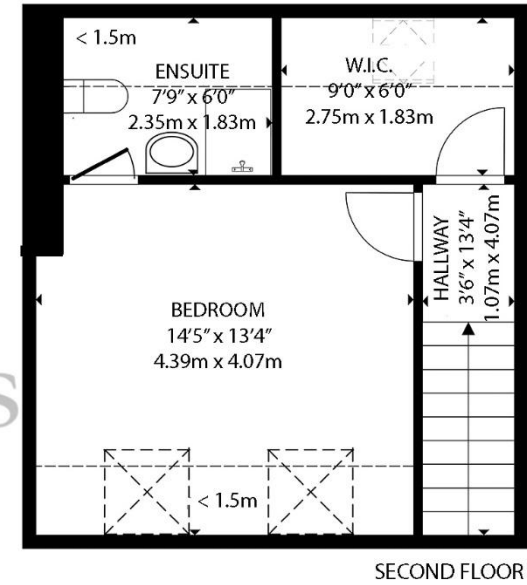
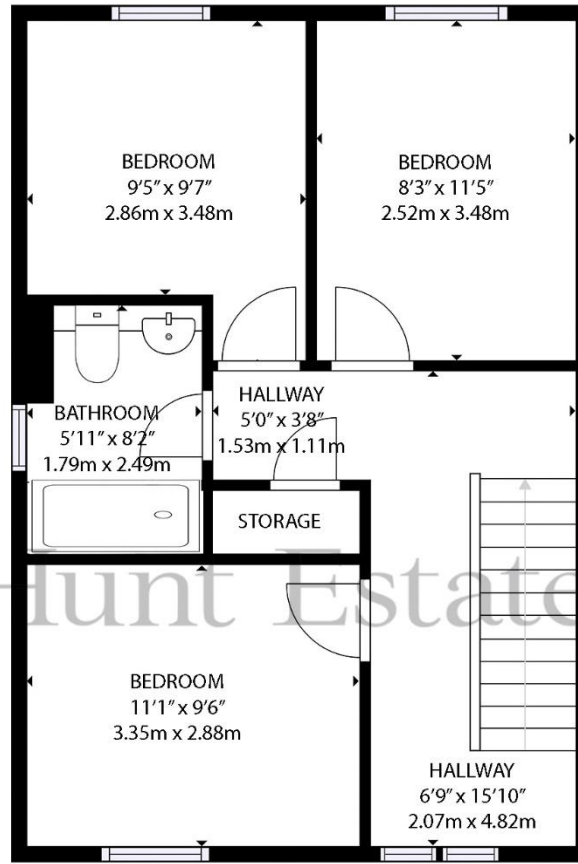
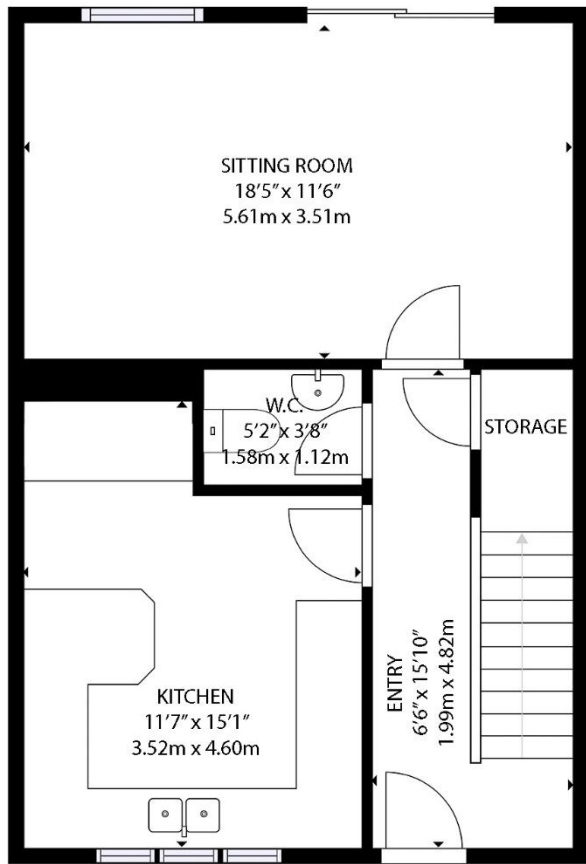
- Mains water and drains
- Electric heating
- Double glazed
- Parking for 3 cars plus visitor parking
- Service charges £150 per quarter
- Parish rates for 2025 were £660
- Freehold and Entitled/Licensed



Sarah Gallichan
Property Negotiator

sarah@huntstates.com
T +44 (0)7700 713574
www.huntstates.com
9 New Street, St Helier,
Jersey, JE2 3RA

CHRISTIE'S | Hunt Estates
INTERNATIONAL REAL ESTATE



GROSS INTERNAL AREA
GROUND FLOOR: 498 sq. ft, 46.2 m2, FIRST FLOOR: 498 sq. ft, 46.2 m2, SECOND FLOOR: 272 sq. ft, 25.2 m2
TOTAL: 1268 sq. ft, 117.8 m2

EXCLUDED AREAS: REDUCED HEADROOM UNDER 1.5M: 83 sq. ft, 7.7 m2

SIZES AND DIMENSIONS ARE APPROXIMATE, ACTUAL MAY VARY

Hunt Estates

9 New Street, St Helier, Jersey, JE2 3RA, Channel Islands | +44 1534 860650 | www.huntestates.com | enquiries@huntestates.com

Disclaimer: All information provided herein has been obtained from sources believed reliable, but may be subject to errors, omissions, change of price, prior sale, withdrawal without notice. Hunt Estates make no representation, warranty, or guarantee as to the accuracy of any information contained herein; interested parties should conduct their own investigations and seek independent advice. No tests have been carried out on any fixtures, fittings, services, or appliances. Measurements are approximate, and photographs are for guidance only. All viewings must be arranged through Hunt Estates.