



Hunt Estates

Four Bedroom, Three Bathroom Town House With Single Garage
St Helier, Jersey

FOUR BEDROOM, THREE BATHROOM TOWN HOUSE WITH SINGLE GARAGE

This attractive four-bedroom, three-bathroom terraced home is set over three floors and offers well-balanced accommodation, an integral single garage, and a private decked and paved garden.

Located just moments from Howard Davis Park, the property enjoys a convenient position within walking distance of the town centre, Co-op supermarket, and a selection of nearby schools.

The ground floor features a separate kitchen and a bright sitting/dining room that flows seamlessly into a conservatory, creating an excellent family and entertaining space. The first floor comprises the primary bedroom with ensuite bathroom, a second bedroom, and a house bathroom. Two further bedrooms and an additional house bathroom are located on the top floor.

The conservatory opens onto a raised decked terrace, with steps leading down to a low-maintenance paved garden. The property also benefits from shared visitor parking.

Built in 2006, the house has been newly redecorated internally, with external repainting planned for Spring 2026.

Available immediately.

















FEATURES

- Terraced town house – built in 2006
- Four bedrooms, three bathrooms
- Newly redecorated internally
- New kitchen appliances
- Set on three floors
- Enclosed decked terrace & paved area
- Close to Howard Davis Park
- Short walk to the town centre

INFORMATION

- Mains water and drains
- Electric central heating
- Double glazed
- Pets by negotiation
- Single garage and shared use visitor parking
- Occupiers' rates for 2025 were £271.37
- Available to Entitled/Licensed residents
- Please note that the equivalent of 1 months' rent is required for the deposit



David Voak MNAEA
Property Negotiator

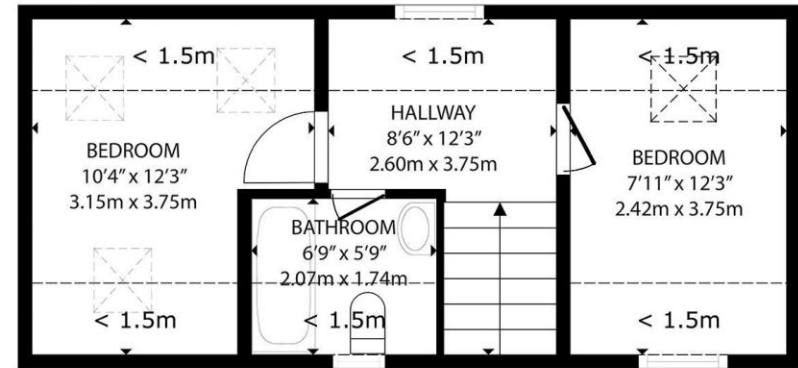
david@huntstates.com
T +44 (0)7797 725621
www.huntstates.com
9 New Street, St Helier,
Jersey, JE2 3RA

CHRISTIE'S | Hunt Estates
INTERNATIONAL REAL ESTATE

GROSS INTERNAL AREA
 GROUND FLOOR: 408 sq. ft, 37.9 m2, FIRST FLOOR: 521 sq. ft, 48.4 m2, SECOND FLOOR: 211 sq. ft, 19.6 m2
 TOTAL: 1155 sq. ft, 107.3 m2

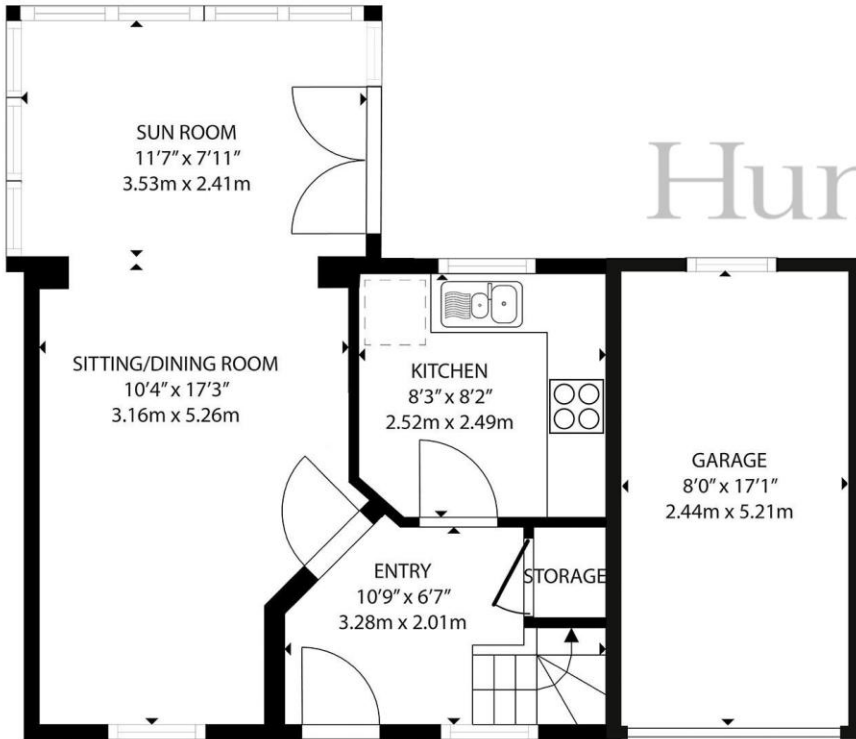
EXCLUDED AREAS: GARAGE: 137 sq. ft, 12.7 m2, REDUCED HEADROOM BELOW 1.5M: 128 sq. ft, 11.9 m2

SIZES AND DIMENSIONS ARE APPROXIMATE, ACTUAL MAY VARY

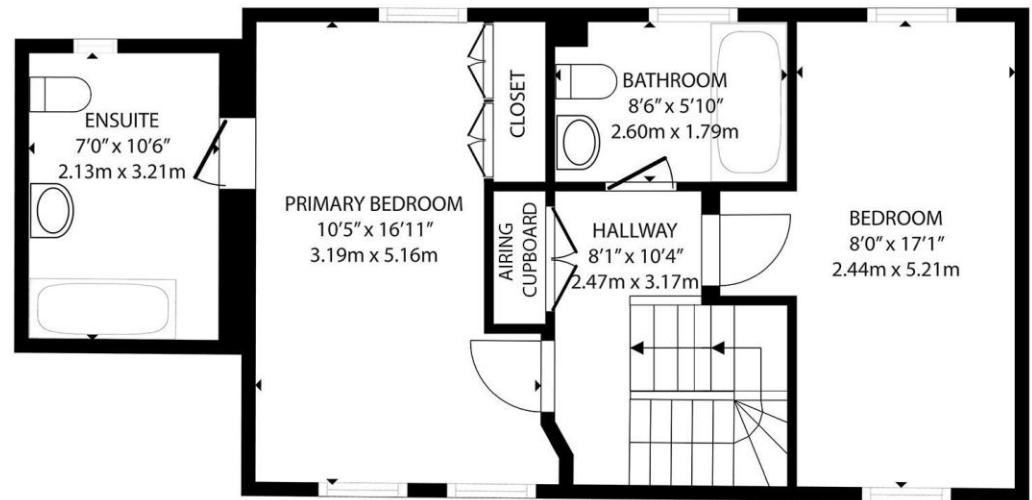


SECOND FLOOR

Hunt Estates



GROUND FLOOR



FIRST FLOOR

Hunt Estates

9 New Street, St Helier, Jersey, JE2 3RA, Channel Islands | +44 1534 860650 | www.huntestates.com | enquiries@huntestates.com

Disclaimer: All information provided herein has been obtained from sources believed reliable, but may be subject to errors, omissions, change of price, prior sale, withdrawal without notice. Hunt Estates make no representation, warranty, or guarantee as to accuracy of any information contained herein. You should consult your advisors for an independent investigation of any properties. All viewings to be conducted through Hunt Estates.