



Hunt Estates

Four Bedroom Semi-Detached Family Home
St. John, Jersey

FOUR BEDROOM SEMI-DETACHED FAMILY HOME

This well-proportioned, four-bedroom home is arranged over three floors and is perfectly suited to family life, with two en-suite bedrooms alongside a family bathroom.

The ground floor includes an entrance porch, a spacious eat-in kitchen, a separate utility room, a WC, and an extended sitting room with a sunroom that overlooks the garden.

The first floor comprises three generously sized bedrooms, including a primary bedroom with an en-suite bathroom and wardrobe area. There is also a family bathroom, perfect for children or guests.

The second floor features a spacious bedroom with its own bathroom, offering an ideal private retreat for parents or teenagers.

Outside, the property benefits from a single garage and ample parking for approximately at least 4 cars to the front of the property, while the private rear garden is mainly paved and decked, providing plenty of space for children to play and for family gatherings.

This charming family home is set in the desirable parish of St John, just a two-minute stroll from St John's village, offering local shops, St John's church, the village pub, and an abundance of countryside walks.

The property is within the catchment area for St John's Primary School and Les Quennevais Secondary School and is approximately a seven-minute drive from St George's School.

















FEATURES

- Extended family home
- Four bedrooms, two bathrooms
- Private rear garden
- Close to amenities
- Located on a good bus route
- Catchment area for Les Quennevais Secondary School

INFORMATION

- Mains water and drains
- Oil fired central heating
- Double glazed
- Single garage and parking for 4+ cars
- Parish rates for 2025 were £553.78
- Freehold and Entitled/Licensed

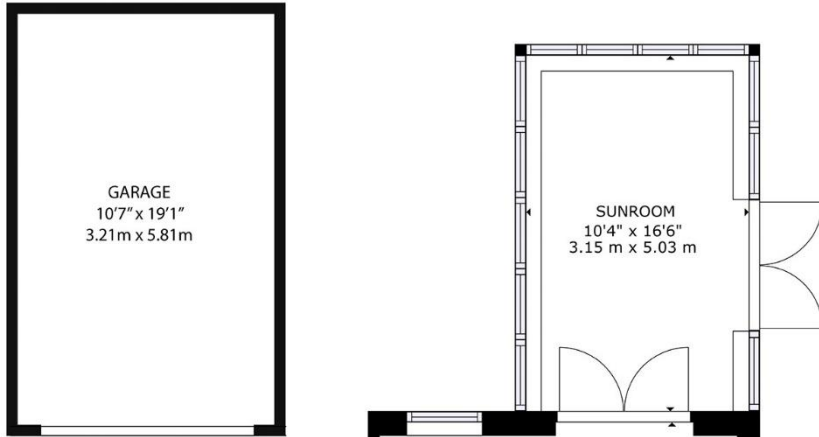


Gill Acton
Property Negotiator

gill.acton@huntstates.com
T +44 (0)7797 961649
www.huntstates.com
9 New Street, St Helier,
Jersey, JE2 3RA

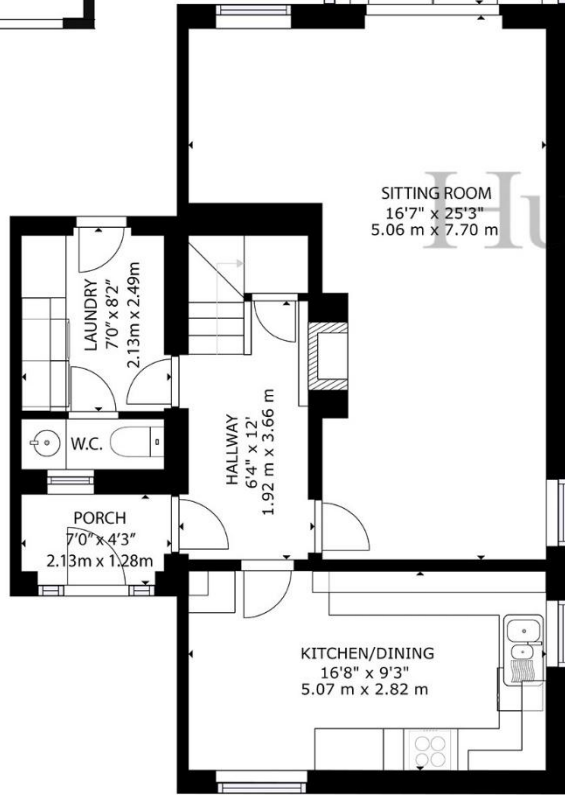
CHRISTIE'S | Hunt Estates
INTERNATIONAL REAL ESTATE



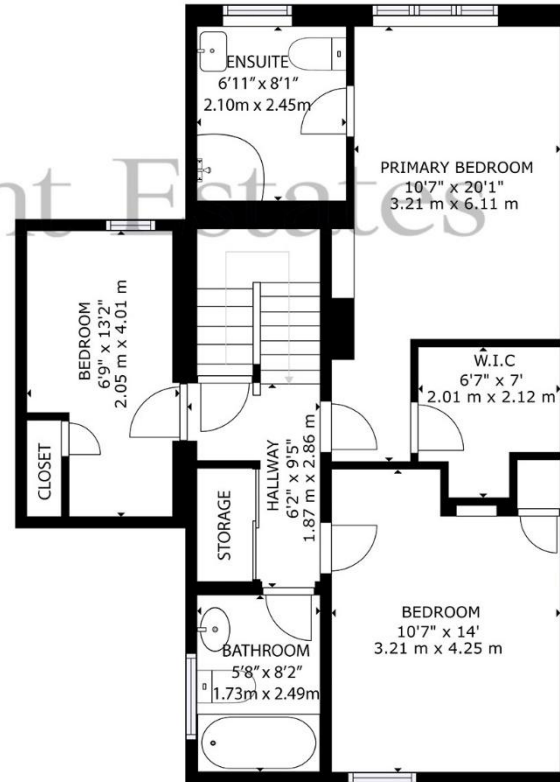


GROSS INTERNAL AREA
 GROUND FLOOR: 914 sq. ft, 84.9 m2, FIRST FLOOR: 686 sq. ft, 63.7 m2, SECOND FLOOR: 407 sq. ft, 37.8 m2
 TOTAL: 2007 sq. ft, 186.4 m2

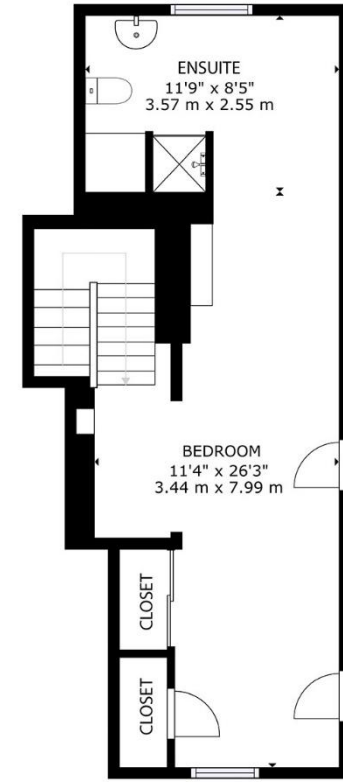
EXCLUDED AREAS: GARAGE: 207 sq. ft, 18.7 m2
 SIZES AND DIMENSIONS ARE APPROXIMATE, ACTUAL MAY VARY



GROUND FLOOR



FIRST FLOOR



SECOND FLOOR

Hunt Estates

9 New Street, St Helier, Jersey, JE2 3RA, Channel Islands | +44 1534 860650 | www.huntestates.com | enquiries@huntestates.com

Disclaimer: All information provided herein has been obtained from sources believed reliable, but may be subject to errors, omissions, change of price, prior sale, withdrawal without notice. Hunt Estates make no representation, warranty, or guarantee as to the accuracy of any information contained herein; interested parties should conduct their own investigations and seek independent advice. No tests have been carried out on any fixtures, fittings, services, or appliances. Measurements are approximate, and photographs are for guidance only. All viewings must be arranged through Hunt Estates.