



Hunt Estates

CHRISTIE'S
INTERNATIONAL REAL ESTATE

Elegant Two Bedroom Duplex Apartment
St Mary, Jersey

ELEGANT TWO BEDROOM DUPLEX APARTMENT IN COUNTRY SETTING

A beautifully presented duplex apartment occupying approximately 2,300 sq. ft within a recently modernised and sympathetically restored building. The development's elegant architecture and thoughtful renovation blend classic charm with contemporary living.

The spacious accommodation benefits from generous room proportions and high ceilings, with large windows that allow natural light to flood through every level. All internal fixtures and fittings have been finished to a high standard, perfectly in keeping with the character of this exceptional home.

Comprising: an inviting entrance hall and cloakroom leading to an impressive 28 ft sitting room, the commanding centre piece of the home. The well-appointed kitchen features a central island and space for a breakfast table, ideal for relaxed mornings and entertaining alike.

Stairs lead down to two generous bedrooms, a utility room and excellent storage. The principal bedroom enjoys a dressing area and ensuite bathroom with both bath and separate shower, while the second bedroom also benefits from a stylish shower room and fitted dressing area with built-in storage.

Externally, the property includes a double garage with an electric door and access to a lightly used communal garden.

Perfectly positioned close to St Lawrence Village, you'll appreciate the village's community feel, with a local grocery store, charming pub/eatery and regular bus links. St Lawrence is known for its peaceful residential streets, easy access to local schools and outdoor space, all while being just a short drive (8–10 minutes) from St Helier's town centre, offering excellent shopping, dining and

















Hunt Estates

CHRISTIE'S
INTERNATIONAL REAL ESTATE



ST MATTHEW'S
CONVENT

FEATURES

- Two bedrooms, two bathrooms
- Approximately 2,300 sq. ft of beautifully presented duplex accommodation
- Impressive high ceilings and large windows providing excellent natural light
- Stunning 28 ft sitting room as the centrepiece of the home
- Contemporary kitchen with central island and breakfast space
- Located near St Lawrence Village, just 8–10 minutes' drive to St Helier

INFORMATION

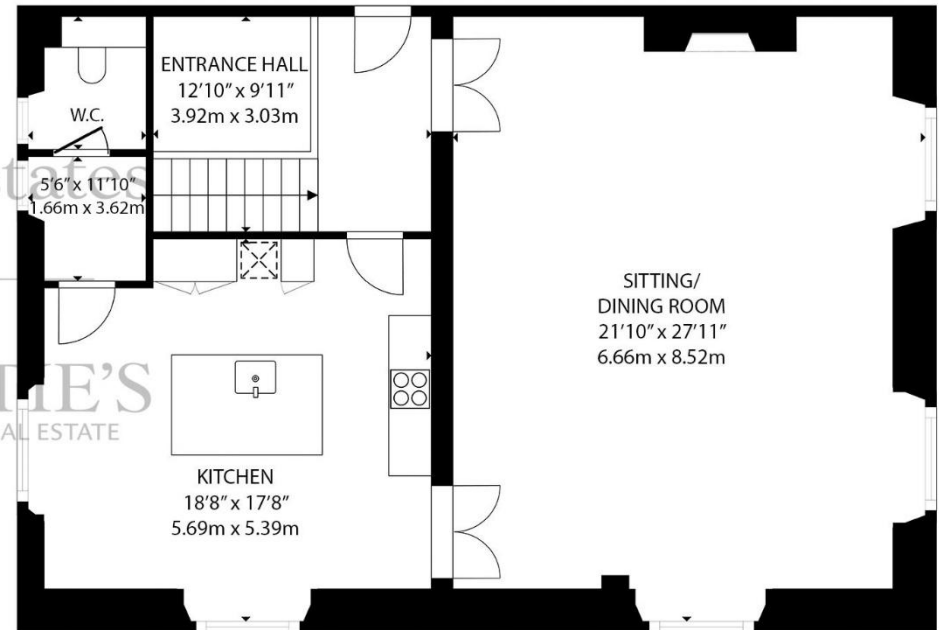
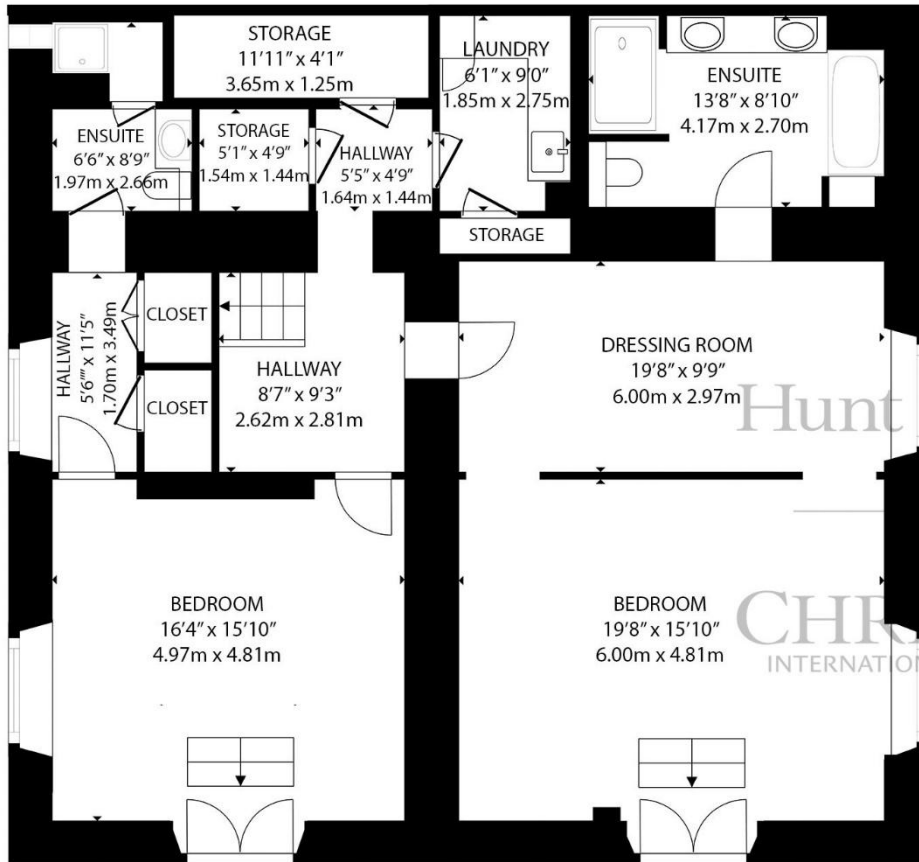
- Mains water and drains
- Electric heating
- Double glazed
- Double garage
- Service charges of £2,142.48 per quarter including sinking fund contributions
- Parish rates for 2025 were £1,040.40
- Flying Freehold and Entitled/Licensed



Gill Hunt, FNAEA
Director

gill@huntestates.com
T +44 (0)7797 721881
www.huntestates.com
9 New Street, St Helier,
Jersey, JE2 3RA

CHRISTIE'S | Hunt Estates
INTERNATIONAL REAL ESTATE



GROSS INTERNAL AREA
 LOWER GROUND FLOOR: 1236 sq. ft, 114.8 m², GROUND FLOOR: 1132 sq. ft, 105.1 m²
 TOTAL: 2368 sq. ft, 219.9 m²

SIZES AND DIMENSIONS ARE APPROXIMATE, ACTUAL MAY VARY

As the selected exclusive affiliate of Christie's International Real Estate in Jersey, Channel Islands, Hunt Estates combines local expertise with global reach via Christie's affiliation to the most famous real estate companies in the world.

An invitation-only affiliate network, Christie's International Real Estate selected Hunt Estates in 2020 to represent the famous Christie's brand in the sphere of luxury real estate in Jersey.



Hunt Estates

CHRISTIE'S

INTERNATIONAL REAL ESTATE

9 New Street, St Helier, Jersey, JE2 3RA, Channel Islands | +44 1534 860650 | www.huntestates.com | enquiries@huntestates.com

Disclaimer: All information provided herein has been obtained from sources believed reliable, but may be subject to errors, omissions, change of price, prior sale, withdrawal without notice. Hunt Estates make no representation, warranty, or guarantee as to the accuracy of any information contained herein; interested parties should conduct their own investigations and seek independent advice. No tests have been carried out on any fixtures, fittings, services, or appliances. Measurements are approximate, and photographs are for guidance only. All viewings must be arranged through Hunt Estates.