



Hunt Estates

CHRISTIE'S
INTERNATIONAL REAL ESTATE

Three-Bedroom Detached Cottage
Grouville, Jersey

THREE-BEDROOM DETACHED COTTAGE – RURAL GROUVILLE

Situated on La Sente des Fonds, a quiet lane in the rural parish of Grouville, this detached cottage, built in 1983, offers generous family accommodation in a peaceful and highly desirable location.

The ground floor comprises a welcoming entrance hall, a spacious eat-in kitchen fitted with a range cooker using bottled gas, and direct access to the integral garage and utility room. The lounge/diner provides a comfortable family living space with access to the rear patio garden. There is also a versatile office which could easily serve as a guest bedroom or additional reception room, along with a cloakroom and useful storage cupboard.

On the first floor, the landing benefits from a large arched window allowing natural light to flood the space. There are three well-proportioned double bedrooms, with the main bedroom enjoying an en-suite bathroom and the second bedroom also benefitting from its own en-suite. A house bathroom serves the remaining accommodation. The loft is accessible from this level and provides excellent additional storage.

Externally, the property enjoys a patio garden to the rear, ideal for outdoor dining, while the front garden is laid to lawn. The home offers approximately 1,600sq ft of internal living space, providing plenty of room for a growing family.

Located in the heart of the popular parish of Grouville, the property is close to Grouville Primary School, the Royal Jersey Golf Club, and within walking distance of the No. 1 bus route.

A wonderful opportunity for a family seeking space, tranquillity and a strong community setting.

Please contact us today to arrange a viewing.







NO SEXISTS
NO RACISTS
NO FASCISTS



















FEATURES

- Three-bedroom detached cottage in rural Grouville
- Two bedrooms with en-suite bathrooms plus house bathroom
- Approx. 1,600 sq. ft of well-balanced family living space
- Versatile office/guest bedroom on the ground floor
- Utility room and generous loft storage
- Quiet lane location close to Grouville School and Royal Jersey Golf Club

INFORMATION

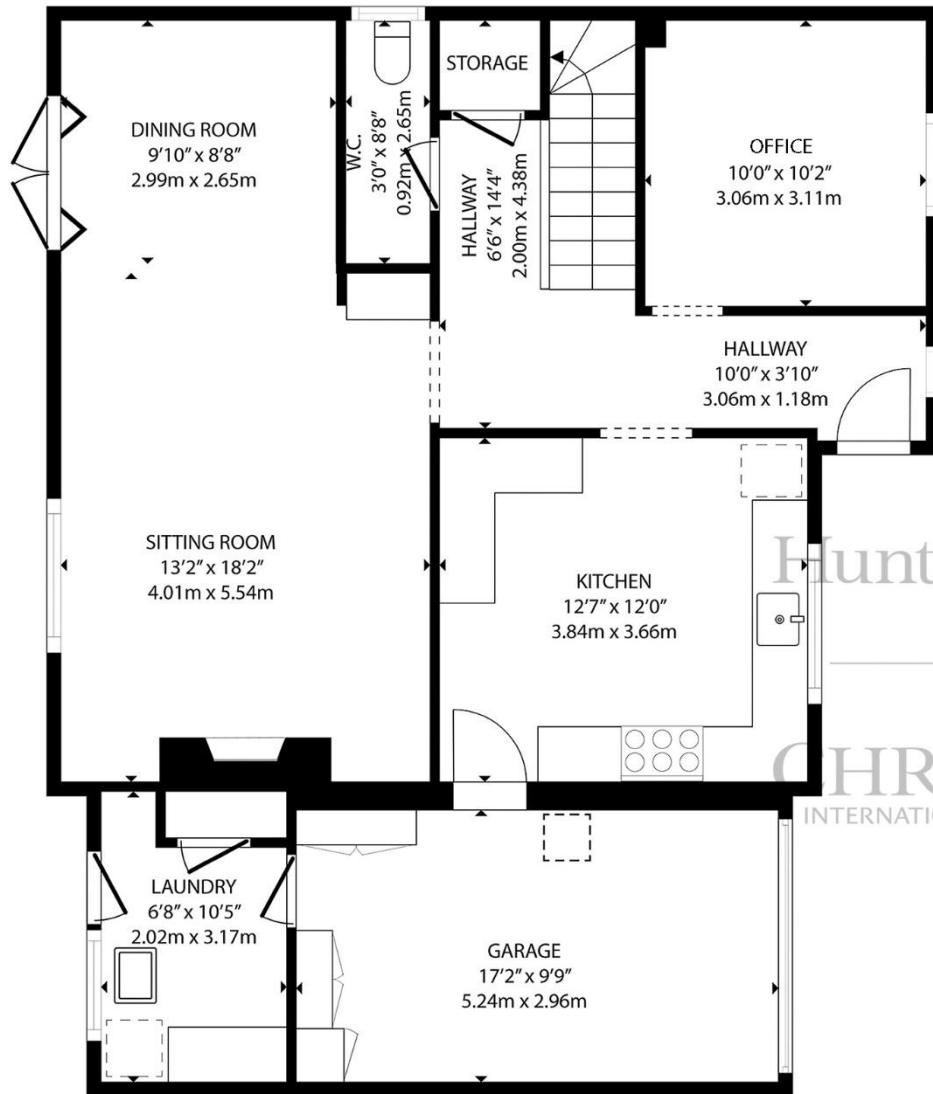
- Mains water and drains
- Oil fired central heating
- Double glazed
- Two parking spaces on drive
- Single garage
- Parish rates for 2025 were £800
- Freehold and Entitled/Licensed



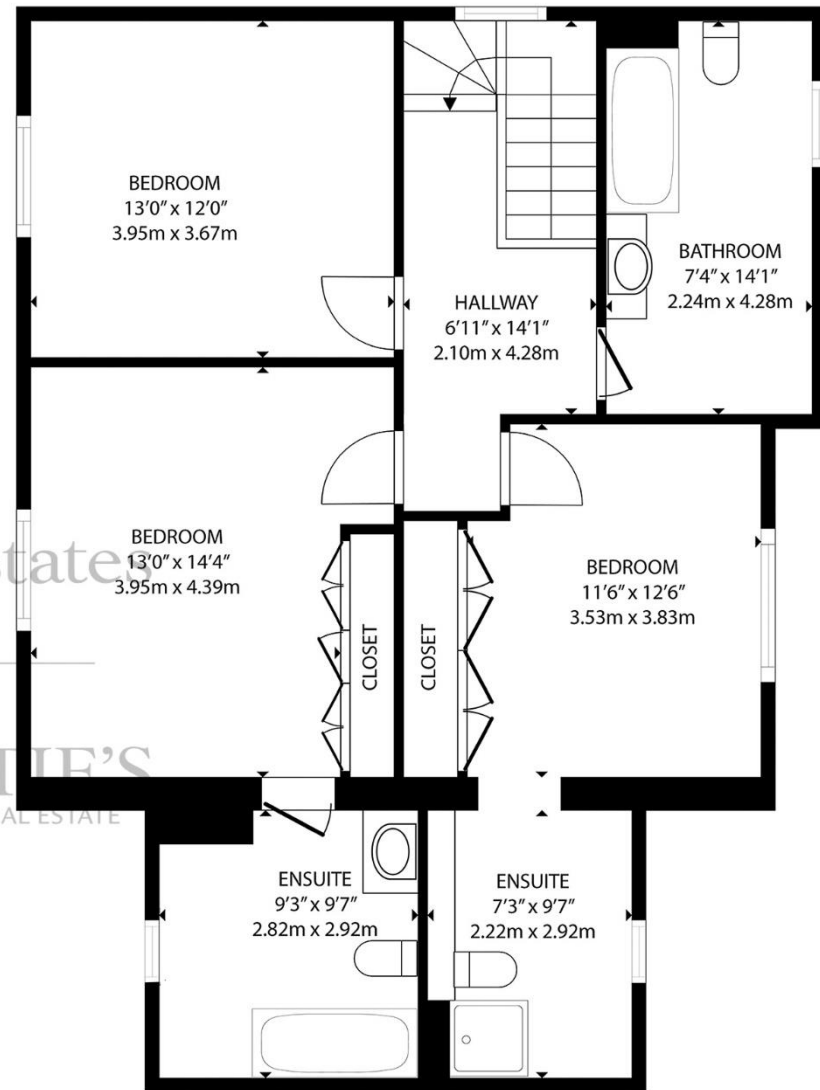
Chris Duhamel
Property Negotiator

chris@huntestates.com
T +44 (0)7700 703525
www.huntestates.com
9 New Street, St Helier,
Jersey, JE2 3RA

CHRISTIE'S | Hunt Estates
INTERNATIONAL REAL ESTATE



GROUND FLOOR



FIRST FLOOR

GROSS INTERNAL AREA
GROUND FLOOR: 739 sq. ft, 68.6 m2, FIRST FLOOR: 844 sq. ft, 78.4 m2
TOTAL: 1583 sq. ft, 147.0 m2

EXCLUDED AREAS: GARAGE: 167 sq. ft, 15.5 m2

SIZES AND DIMENSIONS ARE APPROXIMATE, ACTUAL MAY VARY

As the selected exclusive affiliate of Christie's International Real Estate in Jersey, Channel Islands, Hunt Estates combines local expertise with global reach via Christie's affiliation to the most famous real estate companies in the world. An invitation-only affiliate network, Christie's International Real Estate selected Hunt Estates in 2020 to represent the famous Christie's brand in the sphere of luxury real estate in Jersey.



Hunt Estates

CHRISTIE'S

INTERNATIONAL REAL ESTATE

9 New Street, St Helier, Jersey, JE2 3RA, Channel Islands | +44 1534 860650 | www.huntestates.com | enquiries@huntestates.com

Disclaimer: All information provided herein has been obtained from sources believed reliable, but may be subject to errors, omissions, change of price, prior sale, withdrawal without notice. Hunt Estates make no representation, warranty, or guarantee as to the accuracy of any information contained herein; interested parties should conduct their own investigations and seek independent advice. No tests have been carried out on any fixtures, fittings, services, or appliances. Measurements are approximate, and photographs are for guidance only. All viewings must be arranged through Hunt Estates.