



Hunt Estates

CHRISTIE'S
INTERNATIONAL REAL ESTATE

As New First Floor, Two Bedroom, Two Bathroom Apt
St Helier, Jersey

AS NEW FIRST FLOOR, TWO BEDROOM, TWO BATHROOM APARTMENT

This first floor, two-bedroom, two-bathroom apartment was built in 2021 and is presented in as new condition having been recently redecorated.

The apartment is located close to West Centre and within a five-minute walk of the Royal Square.

The accommodation comprises: fully fitted kitchen which is open plan to the living area and with an external sliding door to the covered balcony. Primary bedroom with an en-suite bathroom and built in wardrobes, a second double bedroom with a “Jack and Jill” accessed bathroom, perfect for guest use. Two storage cupboards within the kitchen area. Communal TV and Satellite system.

The service charges include sinking fund, building insurance, lift maintenance, communal area cleaning, communal area electricity, fire alarm, H&S audit, audio entry system, lighting protection, Mansafe system, refuse store, repairs & maintenance of communal areas, TV & satellite system, water consumption, sprinkler system, Novenco ventilation in communal corridor, landscaping.

Whilst there is no parking included, the location is perfect for a modern lifestyle that doesn't rely on a car. There are communal bike stores and bike racks for use on a first come, first served basis.

Available now with no onward chain.







Hunt Estates
TRISTIE'S
NATIONAL REAL ESTATE







Hunt states

CHRISTIE'S
INTERNATIONAL REAL ESTATE



FEATURES

- Two en-suite bedrooms
- One bedroom has a “Jack and Jill” access bathroom
- Covered balcony
- 744 sq. ft/ 69.1 sq. m
- Built in 2021
- Town centre - close to West Centre
- Immaculately presented

INFORMATION

- Mains water and mains drains (no gas)
- Electric heating with timers
- Triple glazed
- No parking included
- Bike stores/racks on a first come, first served basis
- Service charges are £618.48 per qtr. inc. water usage
- Lift access
- Parish rates for 2025 were £169
- Share transfer

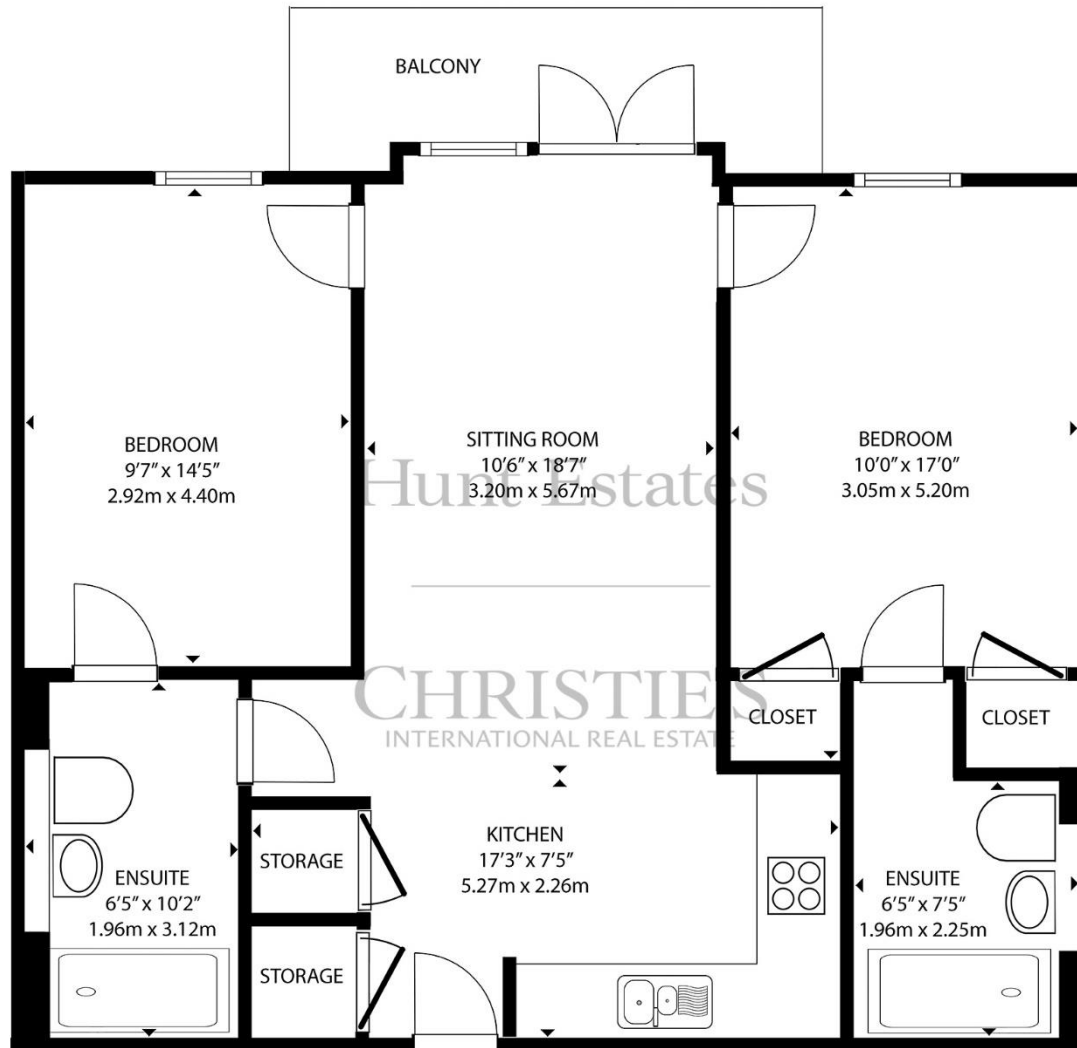
What3words: ///samples.luckier.dollar



David Voak MNAEA
Property Negotiator

david@huntestates.com
T +44 (0)7797 725621
www.huntestates.com
9 New Street, St Helier,
Jersey, JE2 3RA

Hunt Estates | CHRISTIE'S
INTERNATIONAL REAL ESTATE



FIRST FLOOR

GROSS INTERNAL AREA
 FIRST FLOOR: 744 sq. ft, 69.1 m2
 TOTAL: 744 sq. ft, 69.1 m2

SIZES AND DIMENSIONS ARE APPROXIMATE, ACTUAL MAY VARY

As the selected exclusive affiliate of Christie's International Real Estate in Jersey, Channel Islands, Hunt Estates combines local expertise with global reach via Christie's affiliation to the most famous real estate companies in the world. An invitation-only affiliate network, Christie's International Real Estate selected Hunt Estates in 2020 to represent the famous Christie's brand in the sphere of luxury real estate in Jersey.

Hunt Estates

CHRISTIE'S

INTERNATIONAL REAL ESTATE

9 New Street, St Helier, Jersey, JE2 3RA, Channel Islands | +44 1534 860650 | www.huntestates.com | enquiries@huntestates.com

Disclaimer: All information provided herein has been obtained from sources believed reliable, but may be subject to errors, omissions, change of price, prior sale, withdrawal without notice. Hunt Estates make no representation, warranty, or guarantee as to the accuracy of any information contained herein; interested parties should conduct their own investigations and seek independent advice. No tests have been carried out on any fixtures, fittings, services, or appliances. Measurements are approximate, and photographs are for guidance only. All viewings must be arranged through Hunt Estates.