



Hunt Estates

CHRISTIE'S
INTERNATIONAL REAL ESTATE

1940s 2-Gen, Semi-Detached Home
St Saviour, Jersey

1930S FOUR-BEDROOM SEMI-DETACHED HOME WITH STUDIO APARTMENT

Situated along Longueville Road within the popular Bagot Manor Avenue, this attractive 1940s semi-detached home offers generous and versatile living, complemented by a self-contained studio apartment.

The main house briefly comprises a welcoming entrance hall with cloakroom and a ground floor bedroom with en-suite, ideal for guests or flexible family use. There is a spacious lounge featuring a bay window and fireplace, along with a fully fitted kitchen/diner to the rear, complete with bi-fold doors opening onto the garden, creating an excellent indoor-outdoor flow.

On the first floor, there are three further bedrooms, a house bathroom, and access to a generously sized loft providing additional storage.

Externally, the property benefits from a self-contained studio unit with its own private entrance, small outdoor area and storage. The studio comprises a kitchen, living/sleeping area and bathroom, making it ideal for guest accommodation, multi-generational living, or as a potential income stream.

The main house enjoys a low-maintenance east-facing rear garden. To the front, there is parking for two vehicles with the potential to create a third space if required.

This is a highly versatile home offering excellent scope for a variety of buyers, whether seeking additional income, flexible living arrangements, or space for extended family.

Please contact us today to arrange a viewing.



Hunt Estates

CHRISTIE'S
INTERNATIONAL REAL ESTATE







Hunt Estates

CHRISTIE'S
INTERNATIONAL REAL ESTATE















FEATURES

- 1940s four-bedroom semi-detached home
- Self-contained studio with private entrance and income potential
- Three bathrooms plus cloakroom
- Lounge with bay window and fireplace
- Kitchen/diner with bi-fold doors opening to the garden
- 2x storage rooms

INFORMATION

- Mains drains mains water
- Electric heating
- Double glazed
- Parking for two cars with scope to create a third space
- Parish rates for 2025 were £456.96
- Freehold and Entitled/Licensed

LOCATION

What3words: ///letter.dirt.bedroom

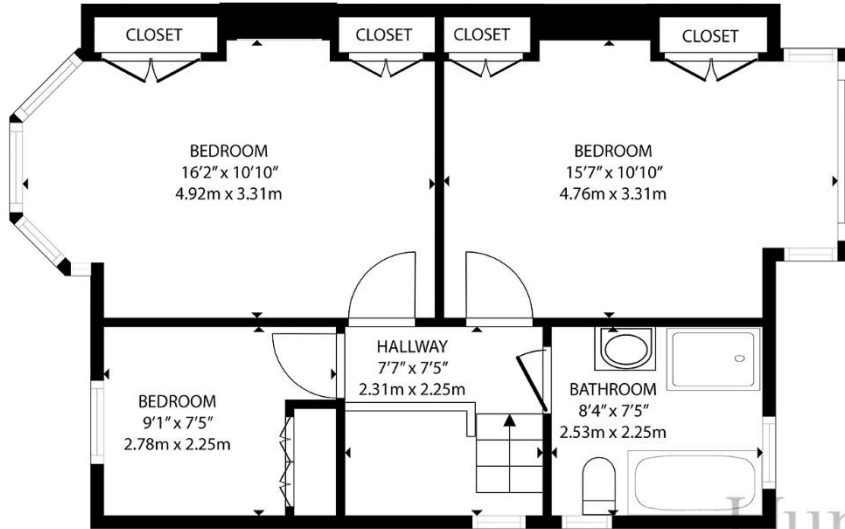


Chris Duhamel
Property Negotiator

chris@huntstates.com
T +44 (0)7700 703525
www.huntstates.com
9 New Street, St Helier,
Jersey, JE2 3RA

Hunt Estates | CHRISTIE'S
INTERNATIONAL REAL ESTATE

FIRST FLOOR

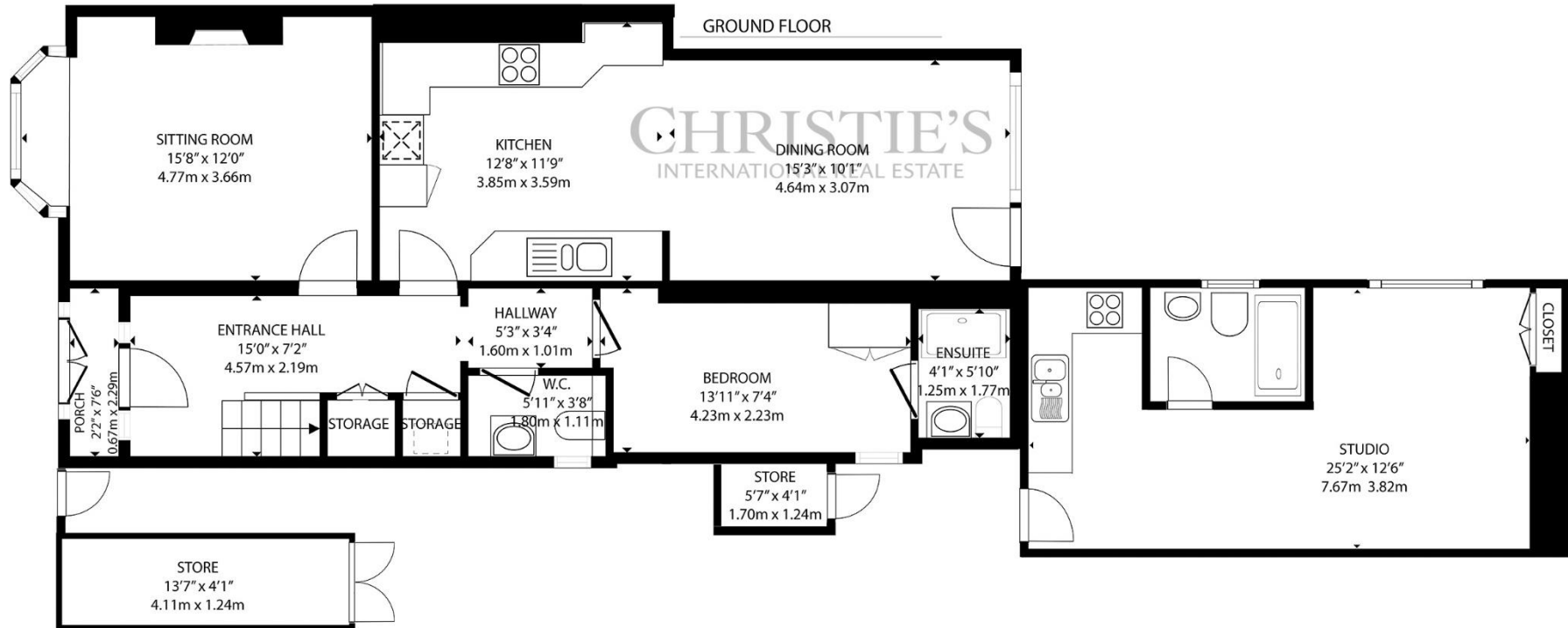


GROSS INTERNAL AREA
 GROUND FLOOR: 781 sq. ft, 72.5 m2, FIRST FLOOR: 529 sq. ft, 49.1 m2, STUDIO: 315 sq. ft, 29.2 m2
 TOTAL: 1625 sq. ft, 150.8 m2

EXCLUDED AREAS: STORES: 78 sq. ft, 7.2 m2

Hunt Estates

GROUND FLOOR



CHRISTIE'S
 INTERNATIONAL REAL ESTATE

As the selected exclusive affiliate of Christie's International Real Estate in Jersey, Channel Islands, Hunt Estates combines local expertise with global reach via Christie's affiliation to the most famous real estate companies in the world. An invitation-only affiliate network, Christie's International Real Estate selected Hunt Estates in 2020 to represent the famous Christie's brand in the sphere of luxury real estate in Jersey.

Hunt Estates

CHRISTIE'S

INTERNATIONAL REAL ESTATE

9 New Street, St Helier, Jersey, JE2 3RA, Channel Islands | +44 1534 860650 | www.huntestates.com | enquiries@huntestates.com

Disclaimer: All information provided herein has been obtained from sources believed reliable, but may be subject to errors, omissions, change of price, prior sale, withdrawal without notice. Hunt Estates make no representation, warranty, or guarantee as to the accuracy of any information contained herein; interested parties should conduct their own investigations and seek independent advice. No tests have been carried out on any fixtures, fittings, services, or appliances. Measurements are approximate, and photographs are for guidance only. All viewings must be arranged through Hunt Estates.