



Hunt Estates

CHRISTIE'S
INTERNATIONAL REAL ESTATE

Hunt Estates

CHRISTIE'S
INTERNATIONAL REAL ESTATE

Two Bedroom South Facing End Of Terrace House
St Mary, Jersey

TWO BEDROOMS PLUS STUDY, SOUTH FACING END OF TERRACE HOUSE

This two bedroom plus study end of terrace house is located within a close of fifteen houses bordering St Mary's Village. The property has an elevated suntrap south facing garden from which to enjoy views across fields in the distance.

The accommodation comprises: entrance hall, ground floor cloakroom, dual aspect kitchen, south facing conservatory and a living room with a working fireplace.

On the first floor there is a house bathroom with a bath and shower, two double bedrooms and a study. There is a good-sized loft for storage, with folding ladder access. The conservatory doors open to the south facing garden and there is also side gate access.

Within the cul de sac close of houses there are parking areas with non-designated parking spaces. This property lies furthest in to the close with the parking area close to the front of the house generally used by the houses closest to it.

The location is served by the No 7 and No 10 bus routes and lies within the catchment area for

St Marys Primary School and Les Quennevais. The primary school lies within a 10-minute walk.

The property is now vacant having been let out for many years and would benefit from some gentle modernisation. No onward chain.











Hunt Estates

CHRISTIE'S
INTERNATIONAL REAL ESTATE













FEATURES

- Two double bedrooms & study
- Eat-in kitchen & separate living room
- Conservatory
- South facing garden
- End of terrace
- 10 min walk to St Mary's Primary School

INFORMATION

- Mains water, mains drains
- Electric heating
- Double glazed
- Non designated parking within the close
- Parish rates for 2025 were £500
- Freehold and available to Entitled/Licensed

LOCATION

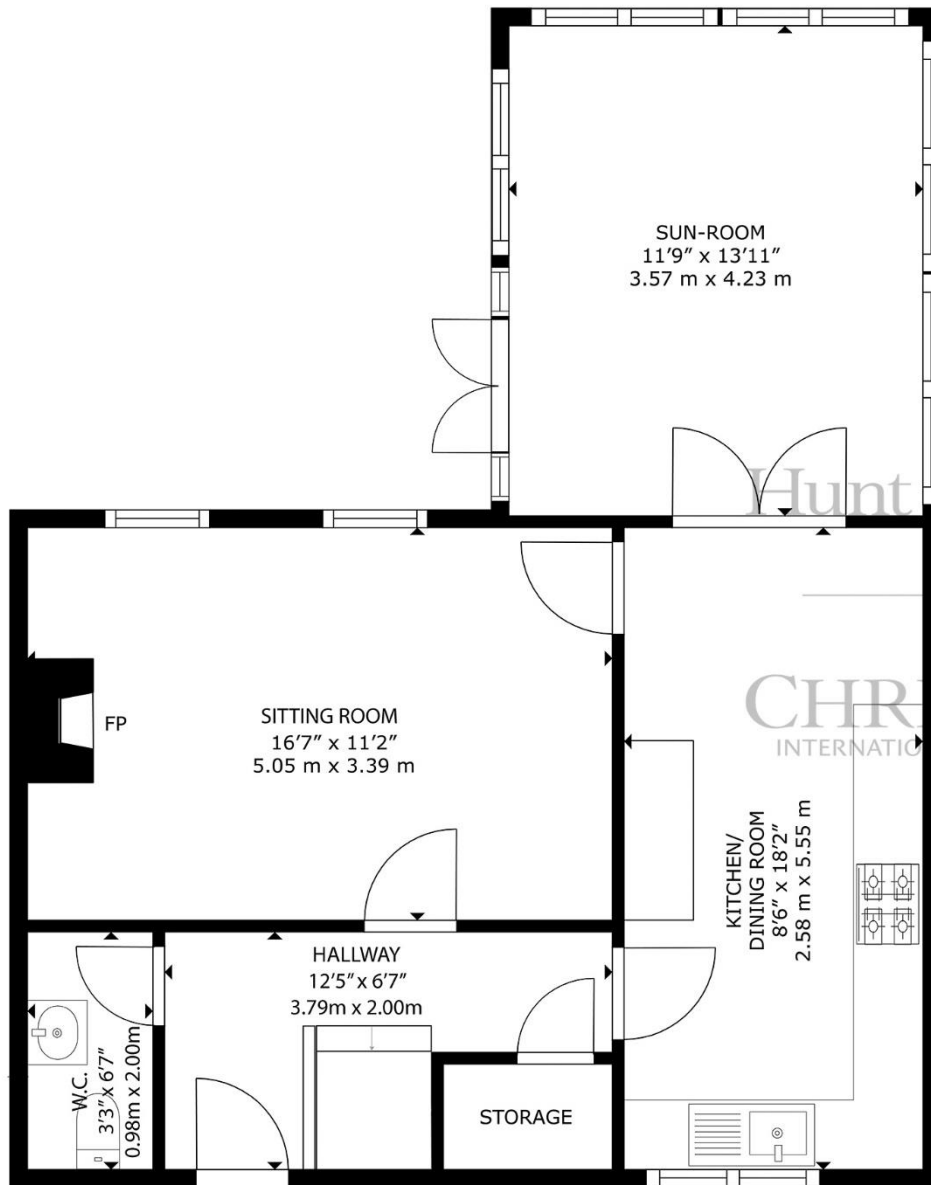
What3words: ///exam.imitators.teeth



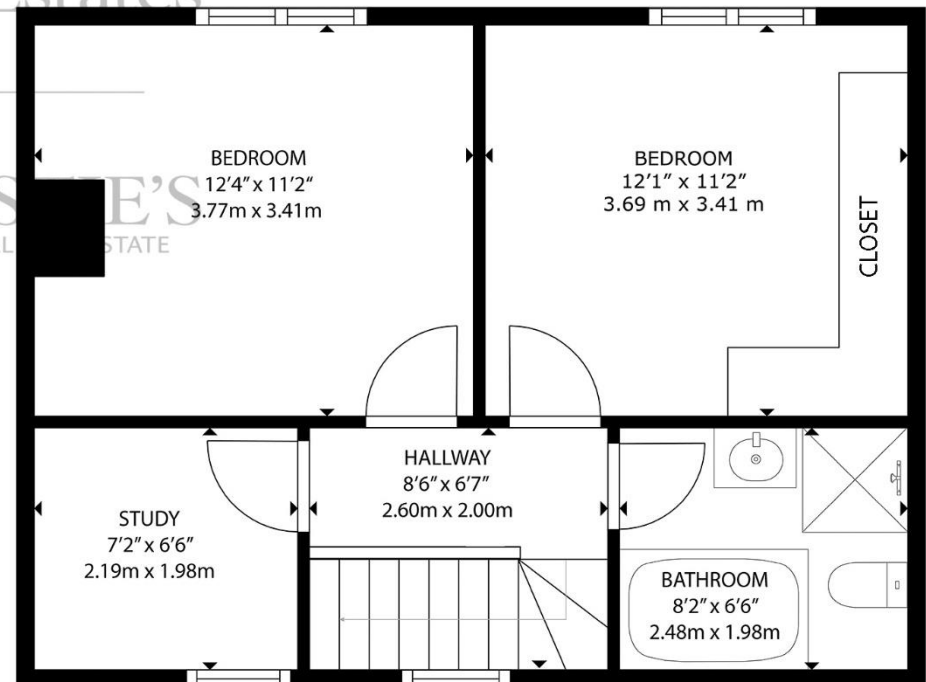
David Voak MNAEA
Property Negotiator

david@huntestates.com
T +44 (0)7797 725621
www.huntestates.com
9 New Street, St Helier,
Jersey, JE2 3RA

Hunt Estates | **CHRISTIE'S**
INTERNATIONAL REAL ESTATE



GROUND FLOOR



FIRST FLOOR

GROSS INTERNAL AREA
 GROUND FLOOR: 606 sq. ft, 56.2 m², FIRST FLOOR: 429 sq. ft, 39.8 m²
 TOTAL: 1035 sq. ft, 96.1 m²

SIZES AND DIMENSIONS ARE APPROXIMATE, ACTUAL MAY VARY

Hunt Estates

CHRISTIE'S
 INTERNATIONAL REAL ESTATE

As the selected exclusive affiliate of Christie's International Real Estate in Jersey, Channel Islands, Hunt Estates combines local expertise with global reach via Christie's affiliation to the most famous real estate companies in the world. An invitation-only affiliate network, Christie's International Real Estate selected Hunt Estates in 2020 to represent the famous Christie's brand in the sphere of luxury real estate in Jersey.

Hunt Estates

CHRISTIE'S

INTERNATIONAL REAL ESTATE

9 New Street, St Helier, Jersey, JE2 3RA, Channel Islands | +44 1534 860650 | www.huntestates.com | enquiries@huntestates.com

Disclaimer: All information provided herein has been obtained from sources believed reliable, but may be subject to errors, omissions, change of price, prior sale, withdrawal without notice. Hunt Estates make no representation, warranty, or guarantee as to the accuracy of any information contained herein; interested parties should conduct their own investigations and seek independent advice. No tests have been carried out on any fixtures, fittings, services, or appliances. Measurements are approximate, and photographs are for guidance only. All viewings must be arranged through Hunt Estates.