



Hunt Estates

CHRISTIE'S
INTERNATIONAL REAL ESTATE

1930's Two-Bedroom Semi-Detached Home
St John, Jersey

1930's TWO-BEDROOM SEMI-DETACHED HOME

FEATURES

- 2 bedrooms, 1 bathroom
- 1930s semi-detached home in Sion, St John
- Separate lounge, dining room and modern fitted kitchen
- Spacious loft storage
- South-facing front garden with rural field views to the rear
- Workshop, integral garage and parking for approx. 4 cars
- Ideal opportunity to modernise and create a charming countryside home

INFORMATION

- Mains drains, mains water
- Electric heating
- Double glazed in main house but not garage
- Parking for four cars
- Single garage
- Parish rates for 2025 were TBC
- Freehold and Entitled/Licensed

LOCATION

What3words: ///chopped.outsell.belongings

Located in the popular Sion area of St John, tucked away off the main road on La Rue des Servais, this charming 1930's semi-detached home offers an excellent opportunity for buyers looking to modernise and create a wonderful home in a peaceful parish setting.

The accommodation briefly comprises a porch, welcoming entrance hall, lounge, separate dining room, modern fitted kitchen, shower room, and an integral single garage. On the first floor, there are two well-proportioned double bedrooms, along with access to a spacious loft providing excellent storage potential.

Whilst the property would benefit from general modernisation, the kitchen has already been updated, offering a strong starting point for future improvements.

Externally, the home benefits from a south-facing front garden, a workshop, and a rear outside area overlooking working agricultural fields, creating a lovely rural outlook. Including the garage, there is parking for approximately four vehicles.

Perfectly suited as a first home or downsizer property, this home combines countryside surroundings with convenient access to nearby amenities and bus routes.

Please contact us today to arrange a viewing.

Hunt Estates

















Hunter
CHRISTIE'S
INTERNATIONAL REAL ESTATE



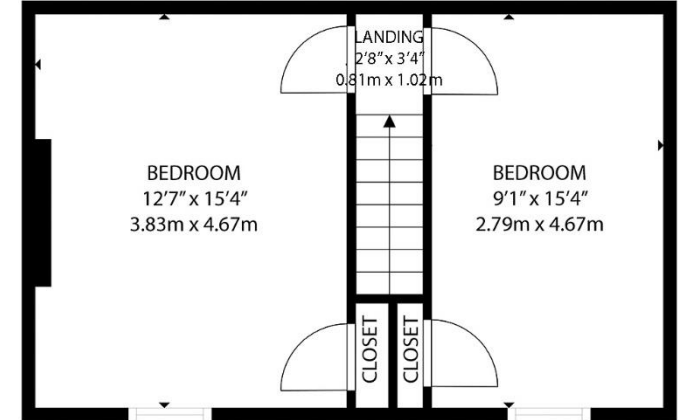
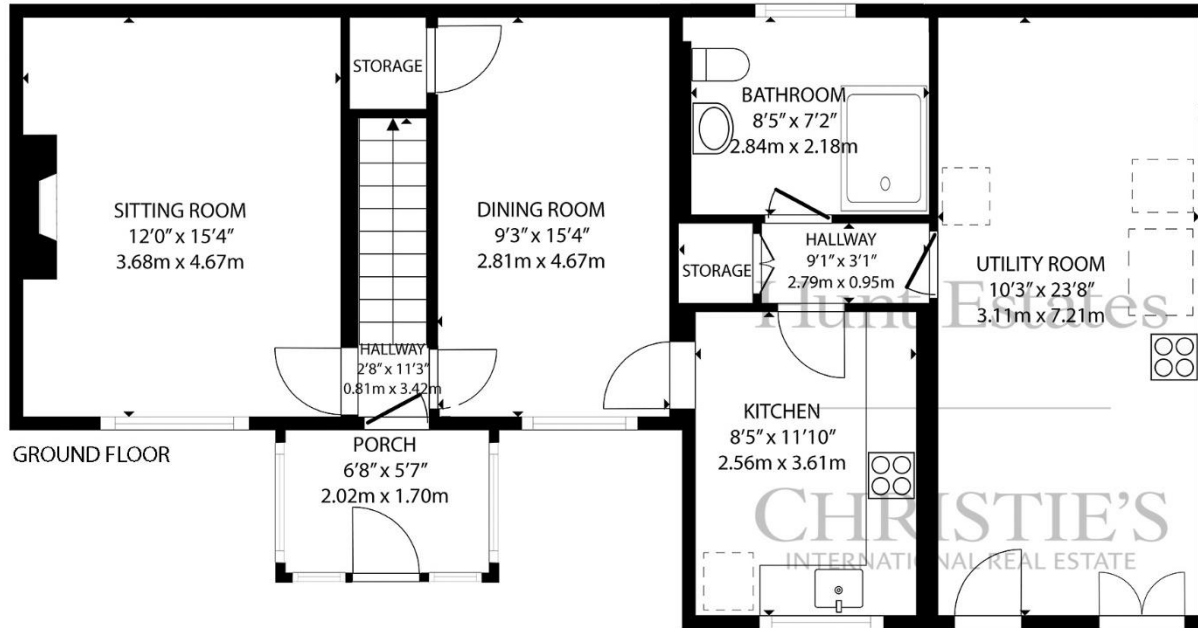


Hunt Estates



Hunt Estates





GROSS INTERNAL AREA
 GROUND FLOOR: 834 sq. ft, 77.4 m2, FIRST FLOOR: 341 sq. ft, 31.6 m2
 TOTAL: 1175 sq. ft, 109.1 m2

EXCLUDED AREAS: STORE: 128 sq. ft, 12.0 m2

SIZES AND DIMENSIONS ARE APPROXIMATE, ACTUAL MAY VARY

As the selected exclusive affiliate of Christie's International Real Estate in Jersey, Channel Islands, Hunt Estates combines local expertise with global reach via Christie's affiliation to the most famous real estate companies in the world. An invitation-only affiliate network, Christie's International Real Estate selected Hunt Estates in 2020 to represent the famous Christie's brand in the sphere of luxury real estate in Jersey.

Hunt Estates

CHRISTIE'S

INTERNATIONAL REAL ESTATE

9 New Street, St Helier, Jersey, JE2 3RA, Channel Islands | +44 1534 860650 | www.huntestates.com | enquiries@huntestates.com

Disclaimer: All information provided herein has been obtained from sources believed reliable, but may be subject to errors, omissions, change of price, prior sale, withdrawal without notice. Hunt Estates make no representation, warranty, or guarantee as to the accuracy of any information contained herein; interested parties should conduct their own investigations and seek independent advice. No tests have been carried out on any fixtures, fittings, services, or appliances. Measurements are approximate, and photographs are for guidance only. All viewings must be arranged through Hunt Estates.