



Hunt Estates

CHRISTIE'S
INTERNATIONAL REAL ESTATE

Immaculately Presented Four-Bedroom Home
St Saviour, Jersey

IMMACULATELY PRESENTED FOUR-BEDROOM HOME IN A QUIET AND CONVENIENT LOCATION

This immaculately presented four-bedroom home offers deceptively spacious accommodation, well suited to modern family living.

The ground floor features a generous sitting room with an electric fire within an attractive granite surround, a separate dining room, and a well-equipped kitchen with breakfast bar overlooking the garden. This is complemented by a practical utility area, shower room, additional storage, and integral access to the garage.

Upstairs, there are four well-proportioned bedrooms, two of which benefit from built-in wardrobes, including a primary bedroom, alongside a contemporary house bathroom.

Externally, the property enjoys a private, low-maintenance courtyard garden ideal for outdoor dining, together with parking and a single garage. Situated in a quiet residential area, it remains within easy reach of well-regarded schools and local amenities.

A smartly presented and versatile home, early viewing is recommended.















Hunt Estates

CENTRAL





Hunt Estates

01273 834444
www.hunt-estates.co.uk





FEATURES

- 4 bedrooms and 2 bathrooms
- Over 1500 sq. ft
- Deceptively spacious layout ideal for family living
- Immaculately presented throughout with a high standard of finish
- Private, low-maintenance courtyard garden
- Parking and integral garage in a quiet, convenient location
- Situated near all major schools
- Located near a bus stop

INFORMATION

- Mains drains and water
- Oil fired central heating
- Double Glazing
- Garage plus parking for one
- Parish rates for 2025 were £566.00
- Freehold and Entitled/Licensed

LOCATION

What3words: /// dignity.curious.dance

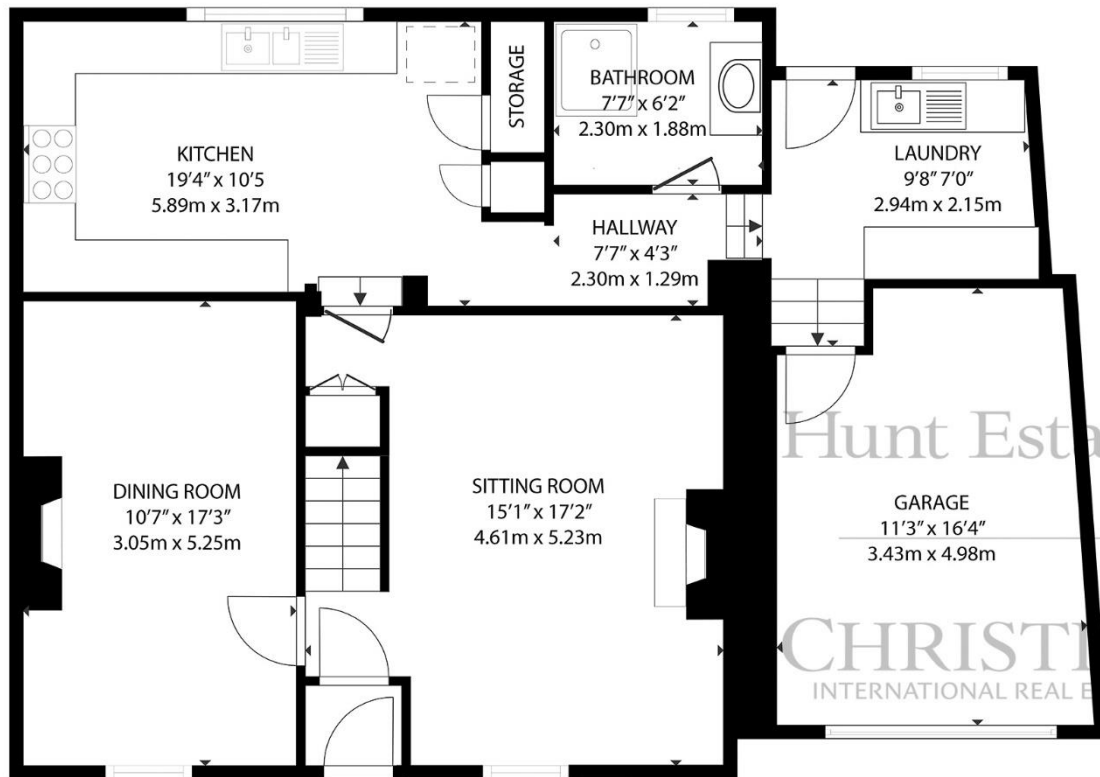


Sarah Gallichan
Property Negotiator

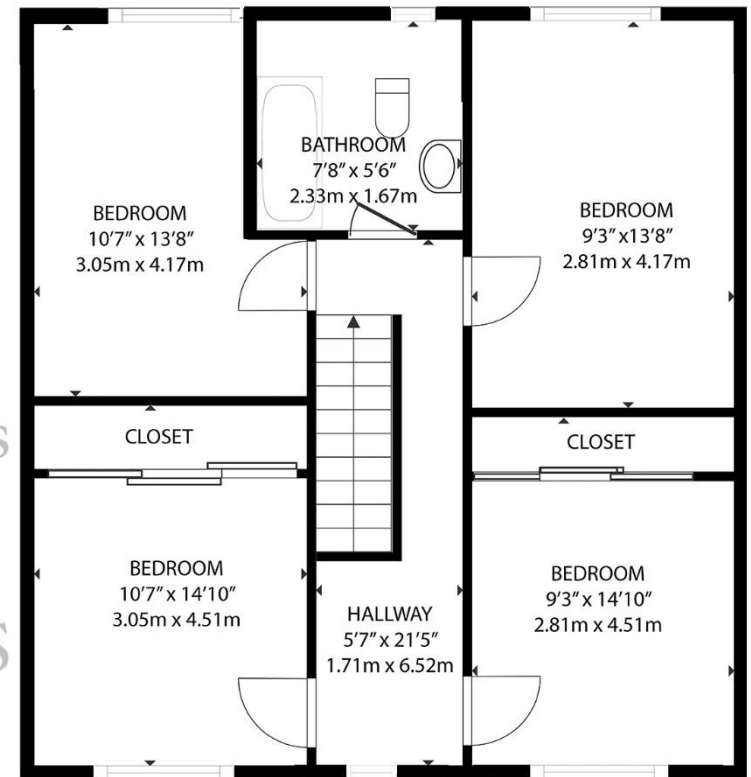
sarah@huntestates.com
T +44 (0)7700 713574
www.huntestates.com
9 New Street, St Helier,
Jersey, JE2 3RA

Hunt Estates | CHRISTIE'S
INTERNATIONAL REAL ESTATE





GROUND FLOOR



FIRST FLOOR

GROSS INTERNAL AREA
 GROUND FLOOR: 790 sq. ft, 73.3 m2, FIRST FLOOR: 727 sq. ft, 67.5 m2
 TOTAL: 1517 sq. ft, 140.9 m2

EXCLUDED AREAS: GARAGE: 184 sq. ft, 17.0 m2

SIZES AND DIMENSIONS ARE APPROXIMATE, ACTUAL MAY VARY

As the selected exclusive affiliate of Christie's International Real Estate in Jersey, Channel Islands, Hunt Estates combines local expertise with global reach via Christie's affiliation to the most famous real estate companies in the world. An invitation-only affiliate network, Christie's International Real Estate selected Hunt Estates in 2020 to represent the famous Christie's brand in the sphere of luxury real estate in Jersey.

Hunt Estates

CHRISTIE'S

INTERNATIONAL REAL ESTATE

9 New Street, St Helier, Jersey, JE2 3RA, Channel Islands | +44 1534 860650 | www.huntestates.com | enquiries@huntestates.com

Disclaimer: All information provided herein has been obtained from sources believed reliable, but may be subject to errors, omissions, change of price, prior sale, withdrawal without notice. Hunt Estates make no representation, warranty, or guarantee as to the accuracy of any information contained herein; interested parties should conduct their own investigations and seek independent advice. No tests have been carried out on any fixtures, fittings, services, or appliances. Measurements are approximate, and photographs are for guidance only. All viewings must be arranged through Hunt Estates.