



Hunt Estates

CHRISTIE'S
INTERNATIONAL REAL ESTATE

Hunt Estates

CHRISTIE'S
INTERNATIONAL REAL ESTATE

New Build Four-Bedroom Detached House
St Brelade, Jersey

NEW BUILD FOUR-BEDROOM DETACHED HOUSE, COMPLETION SUMMER 2026

This new build detached four-bedroom, three-bathroom house is one of just two for which construction is well advanced and due for completion in the Summer of 2026.

The property is located on the headland between Petit Port and Corbiere in an elevated position set well away from the main road and with views south west across Green Zone protected agricultural land. The property is being finished to the highest standards and with an eye to detail, by a well-respected local builder of long standing.

The accommodation is set on two floors and comprises: Ground floor: entrance hall, large utility room, cloakroom, stunning living area with south west facing garden doors, a separate south west facing kitchen and an en-suite double bedroom for long term peace of mind.

On the first floor, there is an ensuite primary bedroom which has a south west facing Juliet balcony, two further double bedrooms and a large house bathroom.

Externally, there is an enclosed child or pet friendly garden area to the south west and a further garden area to the north east elevation.

A large, detached storage building is for the shared use of the two new build houses and provides generous storage for bikes or garden furniture. There are two large parking spaces and a generous shared driveway area with ample room for turning.

The private lane location, La Hougue, is just a five-minute walk to the Railway Track and ten minutes' walk to Petit Port bay. There is the added bonus of a regular bus service which stops just a few minutes' walk away and a five-minute drive will take you to the shopping centre at Red Houses.

This is a rare opportunity to secure a new build property in St Brelade bordering the protected headland and offering a lifestyle that is orientated around easy access to the cycle route and coastal walks.

Viewings strictly by appointment.

FEATURES

- 4 bedrooms, 3 bathrooms & cloaks
- New build detached house (c.1750 sq. ft)
- Elevated headland location
- High standard of construction & finish
- South west facing aspect
- Bordering Green Zone land

INFORMATION

- All mains' services (no gas)
- Electric underfloor heating
- Double glazed
- Parking for two large cars & generous turning area
- Catchment area for La Moye Primary and Quennevais School
- Parish rates for 2026 - TBC
- Freehold and available to Entitled/ Licensed

LOCATION

What3words: ///journal.architect.stopwatch



Hunt Estates

CHRISTIE'S
INTERNATIONAL REAL ESTATE









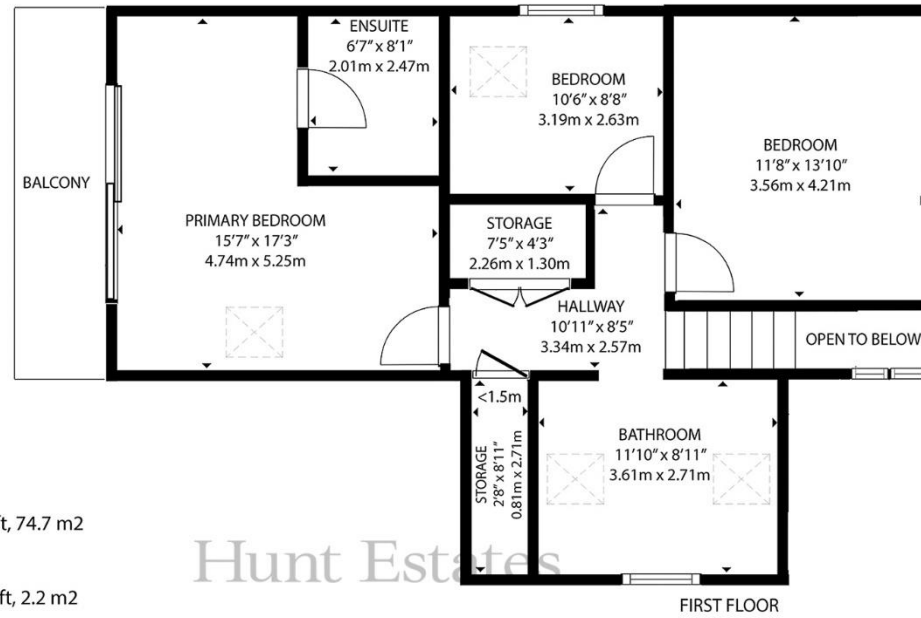






Hunt Estates

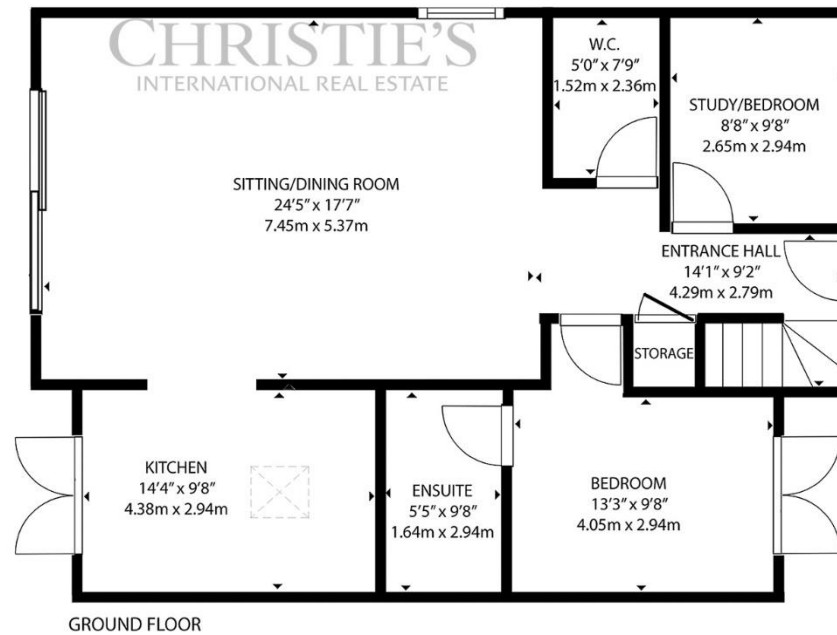
ESTATE



GROSS INTERNAL AREA
 GROUND FLOOR: 1001 sq. ft, 93.0 m2, SECOND FLOOR: 804 sq. ft, 74.7 m2
 TOTAL: 1805 sq. ft, 167.6 m2

EXCLUDED AREAS: REDUCED HEADROOM BELOW 1.5M: 24 sq. ft, 2.2 m2

SIZES AND DIMENSIONS ARE APPROXIMATE, ACTUAL MAY VARY



As the selected exclusive affiliate of Christie's International Real Estate in Jersey, Channel Islands, Hunt Estates combines local expertise with global reach via Christie's affiliation to the most famous real estate companies in the world. An invitation-only affiliate network, Christie's International Real Estate selected Hunt Estates in 2020 to represent the famous Christie's brand in the sphere of luxury real estate in Jersey.

Hunt Estates

CHRISTIE'S

INTERNATIONAL REAL ESTATE

9 New Street, St Helier, Jersey, JE2 3RA, Channel Islands | +44 1534 860650 | www.huntestates.com | enquiries@huntestates.com

Disclaimer: All information provided herein has been obtained from sources believed reliable, but may be subject to errors, omissions, change of price, prior sale, withdrawal without notice. Hunt Estates make no representation, warranty, or guarantee as to the accuracy of any information contained herein; interested parties should conduct their own investigations and seek independent advice. No tests have been carried out on any fixtures, fittings, services, or appliances. Measurements are approximate, and photographs are for guidance only. All viewings must be arranged through Hunt Estates.