



Hunt Estates

CHRISTIE'S
INTERNATIONAL REAL ESTATE

Four-Bedroom Barn Conversion
St Saviour, Jersey

FOUR-BEDROOM, THREE-BATHROOM BARN CONVERSION WITH SOUTH FACING GARDEN

FEATURES

- Four bedrooms, three bathrooms & cloaks
- Set on three floors
- South facing enclosed garden
- High ceiling open plan kitchen / living area
- Part of farm complex renovation in 2017
- 10 min drive to St Helier & secondary schools
- Accommodation: 151 sq. m / 1626 sq. ft

INFORMATION

- Mains water, mains drains (no gas)
- Electric under floor heating
- Double glazed
- Large single garage with electric door and power sockets
- Two further parking spaces, one in front of the garage and one by the front door
- 4 x visitor spaces
- Not subject to Heritage listing
- Service charges £69.73 pcm
- Service charge includes communal gardening, bin shed cleaning/maintenance, common area maintenance, lighting and drain maintenance
- Parish rates for 2025 were £657.80
- Freehold and available to Entitled/ Licensed

LOCATION

What3words: ///insertion.appliances.distribution

This four-bedroom, three-bathroom barn conversion lies within the Highstead farm complex re-development which was completed in 2017.

Located in an elevated position off a country lane with far reaching views from the upper floors over the surrounding country side, yet within 10 minutes' drive of St Helier and many of the secondary schools.

The beautifully presented accommodation comprises; entrance hall, laundry, a high-ceiling fully fitted kitchen which is open plan to the living area with its south facing garden door and two further windows, filling it with natural light.

On the first floor there is a house bathroom with a bath and three double bedrooms, one of which is ensuite. On the second floor is the primary bedroom with an ensuite shower room and a separate dressing room.

Externally there is a south facing sun trap patio and lawned garden that leads off the living area, enclosed by fencing and making it very family/pet friendly. A separate shared field, in communal ownership, creates an ideal space for children to play and gives growing families the benefit of extra outdoor room.

The property benefits from a large single garage fitted with an electric door and power sockets. There is a parking space to the front of the garage and a further space immediately to the front of the house. Within the development there are four shared use visitor spaces.











Hunt Estates

CHRISTIE'S
INTERNATIONAL REAL ESTATE







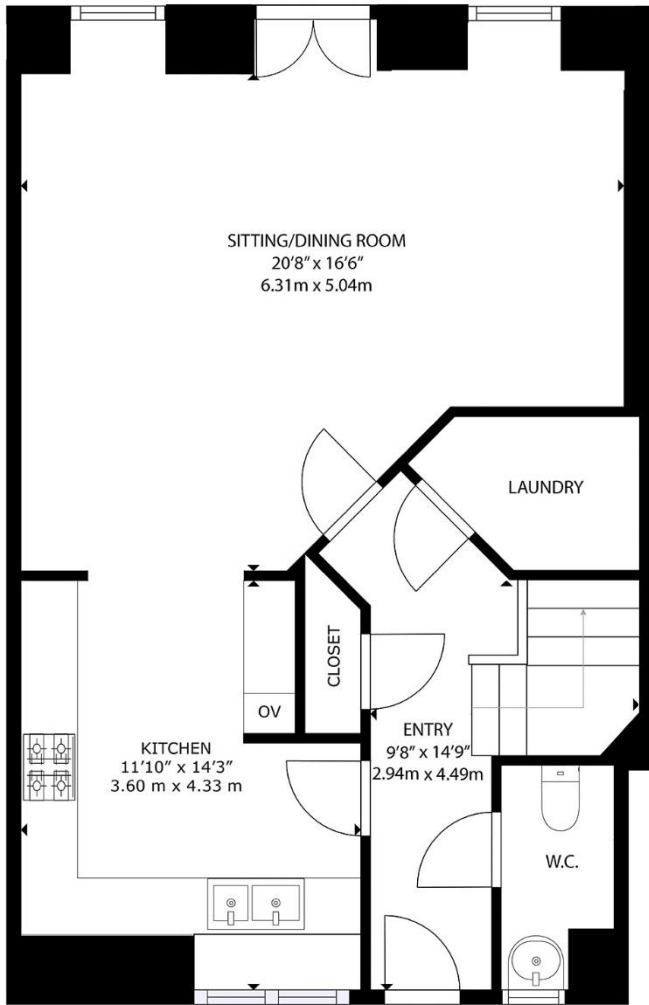




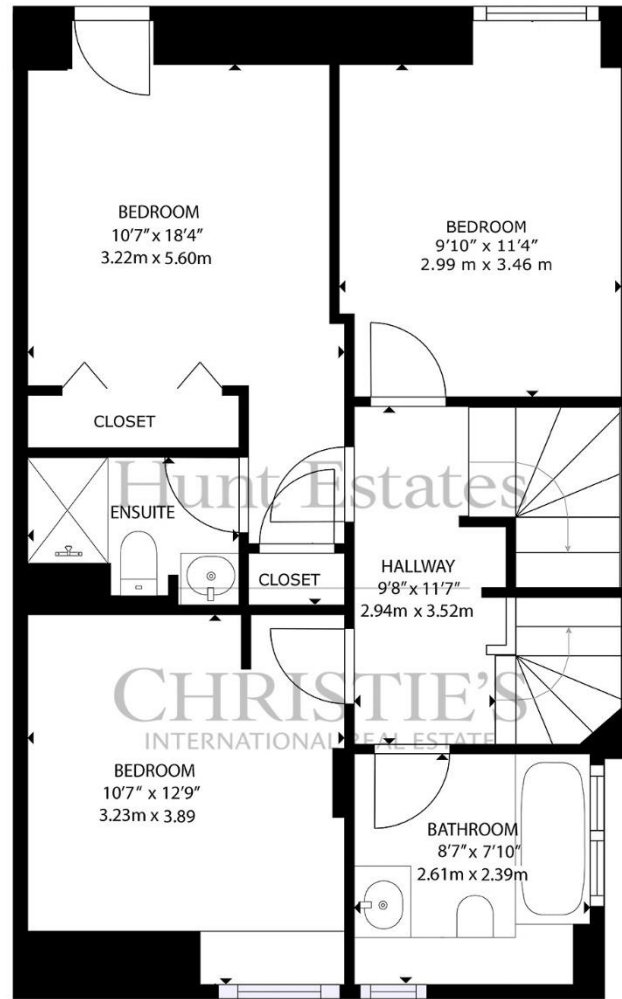




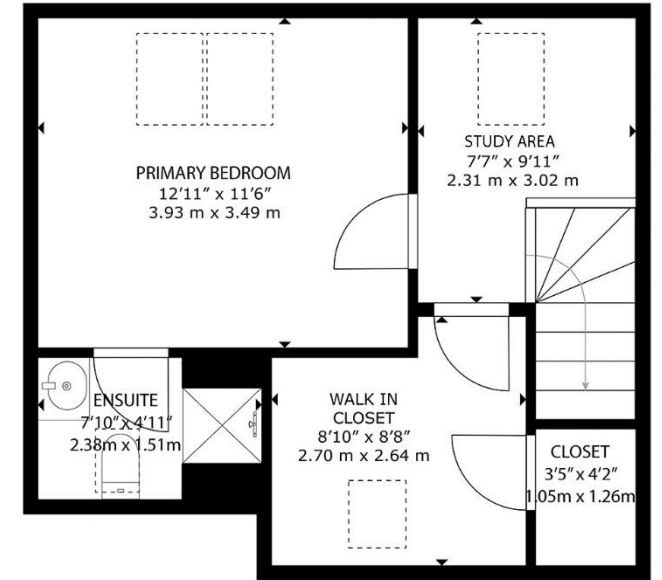
CHRISTIE'S
INTERNATIONAL REAL ESTATE



GROUND FLOOR



FIRST FLOOR



SECOND FLOOR

GROSS INTERNAL AREA
 GROUND FLOOR: 653 sq. ft, 60.6 m2, FIRST FLOOR: 619 sq. ft, 57.5 m2, SECOND FLOOR: 354 sq. ft, 32.8 m2
 TOTAL: 1626 sq. ft, 151.0 m2

SIZES AND DIMENSIONS ARE APPROXIMATE, ACTUAL MAY VARY

As the selected exclusive affiliate of Christie's International Real Estate in Jersey, Channel Islands, Hunt Estates combines local expertise with global reach via Christie's affiliation to the most famous real estate companies in the world. An invitation-only affiliate network, Christie's International Real Estate selected Hunt Estates in 2020 to represent the famous Christie's brand in the sphere of luxury real estate in Jersey.

Hunt Estates

CHRISTIE'S

INTERNATIONAL REAL ESTATE

9 New Street, St Helier, Jersey, JE2 3RA, Channel Islands | +44 1534 860650 | www.huntestates.com | enquiries@huntestates.com

Disclaimer: All information provided herein has been obtained from sources believed reliable, but may be subject to errors, omissions, change of price, prior sale, withdrawal without notice. Hunt Estates make no representation, warranty, or guarantee as to the accuracy of any information contained herein; interested parties should conduct their own investigations and seek independent advice. No tests have been carried out on any fixtures, fittings, services, or appliances. Measurements are approximate, and photographs are for guidance only. All viewings must be arranged through Hunt Estates.