



Hunt Estates

CHRISTIE'S
INTERNATIONAL REAL ESTATE

Modern Large Countryside Residence
St Lawrence, Jersey

MODERN LARGE COUNTRYSIDE RESIDENCE

Set behind electric gates along a quiet green lane, this contemporary country home offers a high degree of privacy and generous living space.

FEATURES

- 5 bedrooms, 4 bathrooms (Main House)
- Approximately 5,700 sq. ft
- Separate 2-bedroom apartment
- Large, enclosed garden, patio areas and orchard
- Gated entrance with garaging and courtyard parking
- Large newly developed entertaining room & main bedroom suite
- Immaculate throughout
- Swimming pool, hot tub and pool house
- 12 vergee surrounding fields

INFORMATION

- Mains water and drains for house
- Borehole water and soakaway for garden water drainage
- Oil fired central heating
- Electric underfloor heating
- Double glazed
- 12 vergee surrounding fields
- Two garages and ample parking
- Parish rates for 2024 were £2,300
- Freehold and Entitled/Licensed

LOCATION

What3words: ///informal.rejoining.dispose

The property has been reconfigured with modern living in mind, centred around an impressive 40ft entertaining room where large skylights and bi-fold doors flooding the room with natural light and direct access to the terrace and garden. This is a space equally suited to relaxed day-to-day living as it is to hosting on a larger scale.

A separate sitting room with a working fireplace offers a more relaxed space, while the kitchen is well equipped including a modern Aga and large centre island. The room opens into a sociable dining area and snug, which is divided by a dual-aspect granite fireplace. A boot room, laundry and gym complete the ground floor.

Upstairs, there are five well-proportioned bedrooms and four bathrooms. The recently created vaulted primary suite forms a standout feature, offering a sense of volume and light, alongside a generous dressing area and large bathroom. A loft room provides further flexibility, ideal as an additional bedroom, home office or recreational space.

The south west facing garden includes a raised pool, hot tub, pool house, patio and lawn, with an adjoining agricultural field enhancing privacy. A detached garage block with a two-bedroom apartment above offers excellent ancillary accommodation, perfectly suited for guests, staff, or potential income.

This is a home that combines scale, privacy and lifestyle in a highly convenient yet tucked-away location, offering immediate enjoyment with scope for further enhancement over time if desired.

















CHRISTIE
INTERNATIONAL REAL ESTATE
International Real Estate







CHRISTIE'S
INTERNATIONAL REAL ESTATE
Hunt Estates



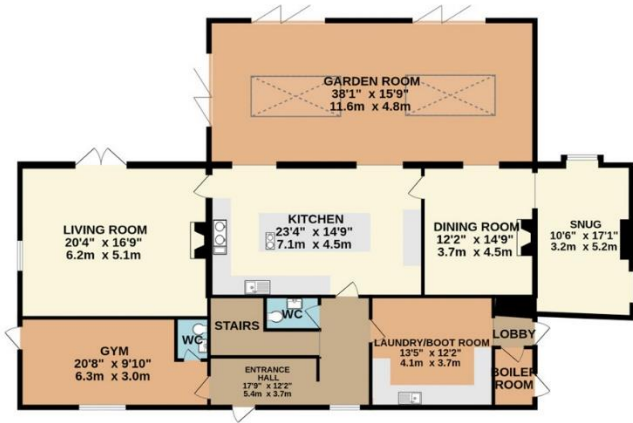




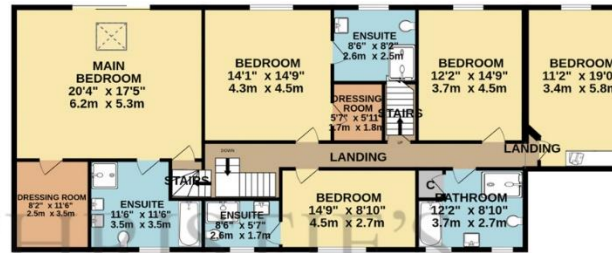




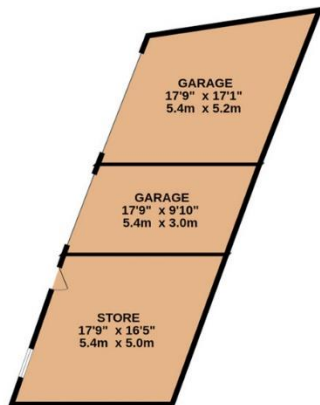
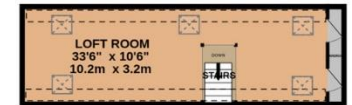
GROUND FLOOR
2955 sq.ft. (274.5 sq.m.) approx.



1ST FLOOR
2404 sq.ft. (223.4 sq.m.) approx.



2ND FLOOR
378 sq.ft. (35.1 sq.m.) approx.



CHRISTIE'S
INTERNATIONAL REAL ESTATE
Hunt Estates

TOTAL FLOOR AREA : 5737 sq.ft. (533.0 sq.m.) approx.

Whilst every attempt has been made to ensure the accuracy of the floorplan contained here, measurements of doors, windows, rooms and any other items are approximate and no responsibility is taken for any error, omission or mis-statement. This plan is for illustrative purposes only and should be used as such by any prospective purchaser. The services, systems and appliances shown have not been tested and no guarantee as to their operability or efficiency can be given.

Made with Metropix ©2024

As the selected exclusive affiliate of Christie's International Real Estate in Jersey, Channel Islands, Hunt Estates combines local expertise with global reach via Christie's affiliation to the most famous real estate companies in the world.

An invitation-only affiliate network, Christie's International Real Estate selected Hunt Estates in 2020 to represent the famous Christie's brand in the sphere of luxury real estate in Jersey.

Hunt Estates

CHRISTIE'S
INTERNATIONAL REAL ESTATE

9 New Street, St Helier, Jersey, JE2 3RA, Channel Islands | +44 1534 860650 | www.huntestates.com | enquiries@huntestates.com

Disclaimer: All information provided herein has been obtained from sources believed reliable, but may be subject to errors, omissions, change of price, prior sale, withdrawal without notice. Hunt Estates make no representation, warranty, or guarantee as to accuracy of any information contained herein. You should consult your advisors for an independent investigation of any properties. All viewings to be conducted through Hunt Estates.