



Hunt Estates

CHRISTIE'S  
INTERNATIONAL REAL ESTATE

One Bedroom Apartment With Parking  
Trinity, Jersey

## FEATURES

- 1 bedroom, 1 bathroom
- First floor, lift access
- Balcony with rural views
- Countryside location
- Personal store room
- Communal swimming pool and gardens

## INFORMATION

- Mains drains and water
- Electric heating
- Double glazed
- Parking for 1 car plus visitor spaces
- Lift access
- Parish rates for 2025 were £264.86
- Flying Freehold and Entitled/Licensed

## LOCATION

What3words: [///composts.tribune.lipsticks](https://www.what3words.com/#!/composts.tribune.lipsticks)

## ONE BEDROOM APARTMENT WITH PARKING

This modern apartment offers bright and well-presented accommodation, featuring an open-plan kitchen and sitting room that opens onto a private balcony with attractive rural views. The spacious bedroom and house bathroom complete the accommodation.

Residents benefit from lift access, an allocated parking space and a private store room. The development is set within beautifully maintained communal gardens and also boasts the use of a swimming pool, providing a wonderful lifestyle opportunity in a peaceful countryside setting.

Ideally located in Trinity, the property combines tranquil rural surroundings with convenient access to local amenities, making it an excellent choice for first-time buyers, downsizers or those seeking a low-maintenance home.





Hunt Es

CHRISTIE'S  
INTERNATIONAL REAL ESTATE



Hunt Estates

CHRISTIE'S  
INTERNATIONAL REAL ESTATE





Home Estates

CHRISTIE'S  
INTERNATIONAL REAL ESTATE



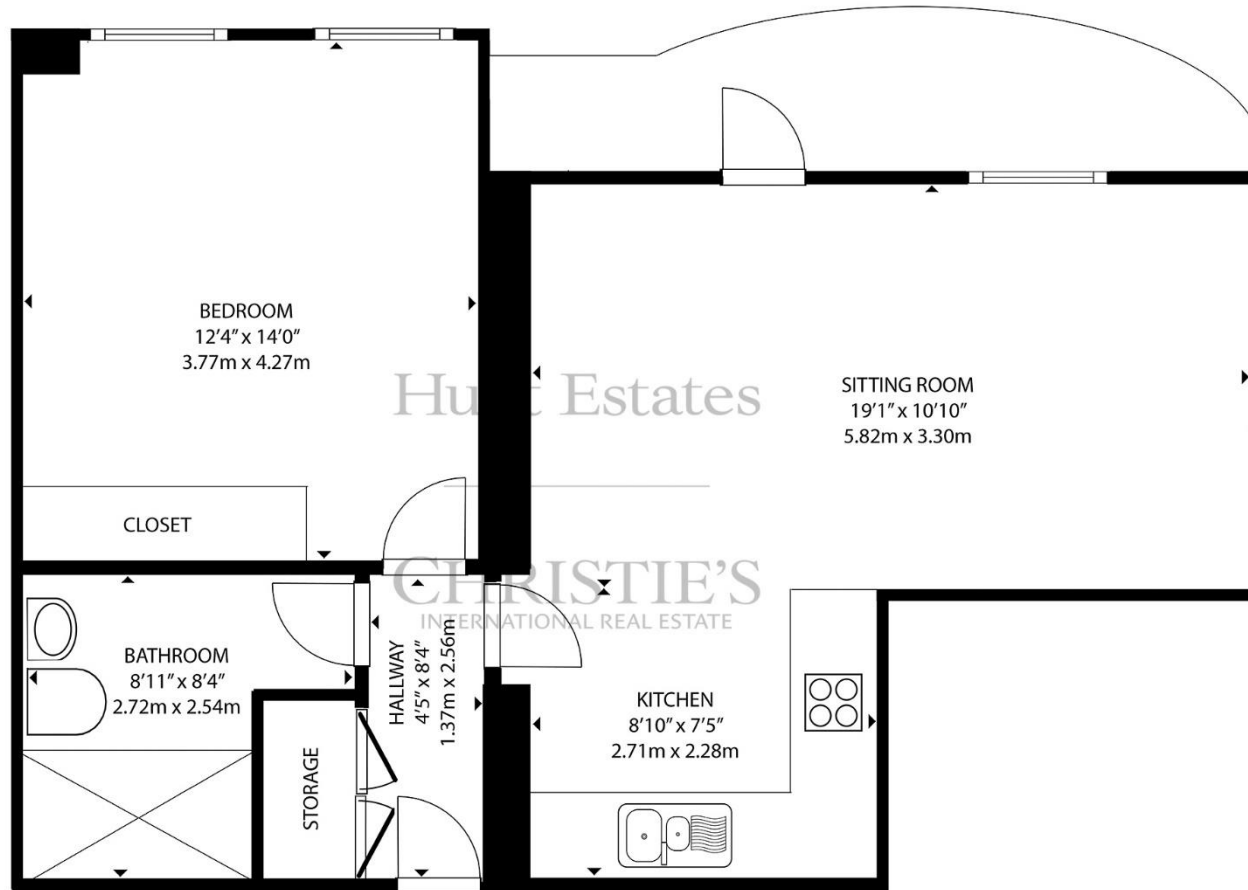
Hunt Estates

CHRISTIE'S  
INTERNATIONAL REAL ESTATE





Hunt Estates



GROSS INTERNAL AREA  
FIRST FLOOR: 557 sq. ft, 51.7 m2  
TOTAL: 557 sq. ft, 51.7 m2

SIZES AND DIMENSIONS ARE APPROXIMATE, ACTUAL MAY VARY

As the selected exclusive affiliate of Christie's International Real Estate in Jersey, Channel Islands, Hunt Estates combines local expertise with global reach via Christie's affiliation to the most famous real estate companies in the world. An invitation-only affiliate network, Christie's International Real Estate selected Hunt Estates in 2020 to represent the famous Christie's brand in the sphere of luxury real estate in Jersey.

# Hunt Estates

# CHRISTIE'S

INTERNATIONAL REAL ESTATE

9 New Street, St Helier, Jersey, JE2 3RA, Channel Islands | +44 1534 860650 | [www.huntestates.com](http://www.huntestates.com) | [enquiries@huntestates.com](mailto:enquiries@huntestates.com)

Disclaimer: All information provided herein has been obtained from sources believed reliable, but may be subject to errors, omissions, change of price, prior sale, withdrawal without notice. Hunt Estates make no representation, warranty, or guarantee as to the accuracy of any information contained herein; interested parties should conduct their own investigations and seek independent advice. No tests have been carried out on any fixtures, fittings, services, or appliances. Measurements are approximate, and photographs are for guidance only. All viewings must be arranged through Hunt Estates.