



Hunt Estates

CHRISTIE'S

Le Capelain House

£3,300 pcm



This spacious penthouse apartment, located in the Castle Quay development, offers an upscale living experience. Boasting two bedrooms and two en-suite bathrooms, this apartment is thoughtfully designed to provide ultimate comfort and convenience.

The standout feature of this penthouse is its panoramic views of the sea, marina, and beach, providing a serene backdrop to everyday life.

The apartment has a luxurious feel and has recently been completely refurbished including raised ceilings in bedrooms, has been wired in for wall mounted TV's, brand new kitchen and appliances and brand new wooden flooring.

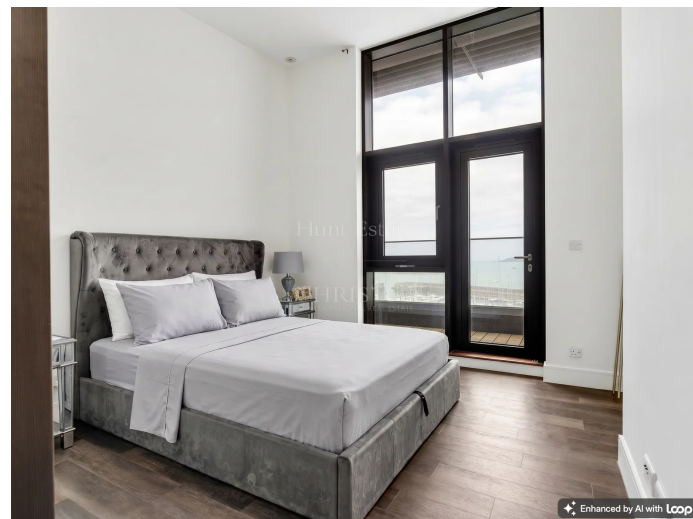
The heart of the apartment is its large open-plan kitchen, dining, and sitting room. This space is perfect for entertaining guests or enjoying quality time with family.

Both bedrooms and the sitting room have access to a wrap-around balcony, inviting residents to bask in the stunning views and soak up the island's natural beauty.

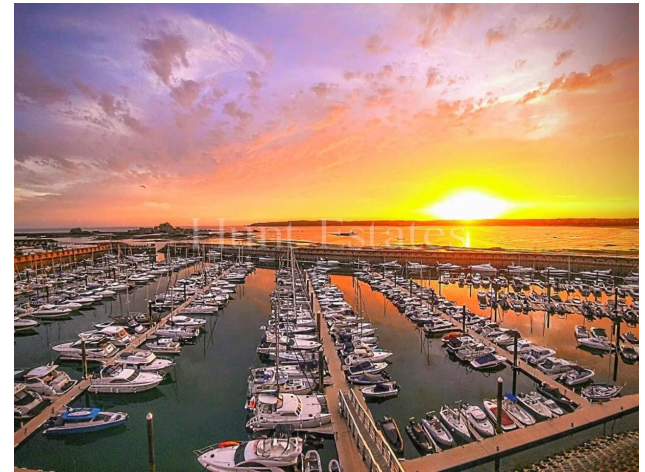
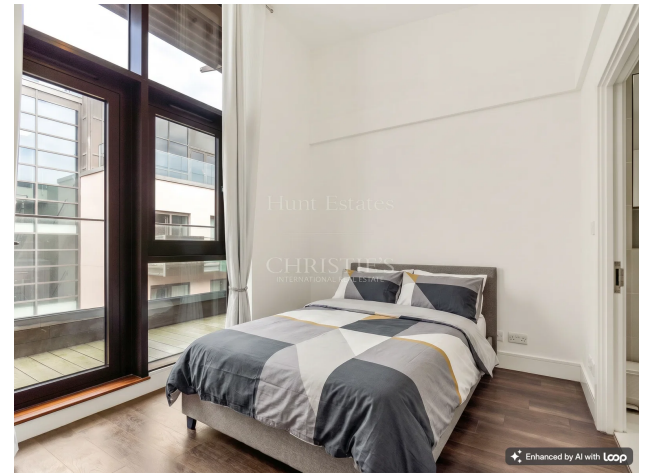
There is also a separate utility room and cloakroom.

The apartment comes with the added benefit of a parking space and a separate lock up storeroom.

Ideal for those who prefer a short commute, this apartment offers the advantage of being within walking distance to the town centre where one can enjoy the vibrant atmosphere of the town, with its array of shops, restaurants, and amenities, just a leisurely stroll away.



This penthouse apartment offers a luxurious lifestyle with its prime location, breathtaking views, and well-designed living spaces. It presents an exceptional opportunity to enjoy the best of St. Helier, and the surrounding area.



TOP FLOOR
1108 sq.ft. (103.0 sq.m.) approx.



TOTAL FLOOR AREA : 1108 sq.ft. (103.0 sq.m.) approx.

Whilst every attempt has been made to ensure the accuracy of the floorplan contained here, measurements of doors, windows, rooms and any other items are approximate and no responsibility is taken for any error, omission or mis-statement. This plan is for illustrative purposes only and should be used as such by any prospective purchaser. The services, systems and appliances shown have not been tested and no guarantee as to their operability or efficiency can be given.

Made with MetroPix ©2026